

KR80 0.25t, 0.5t, 1t, 2t, 3.5t, 5t, 10t



Description

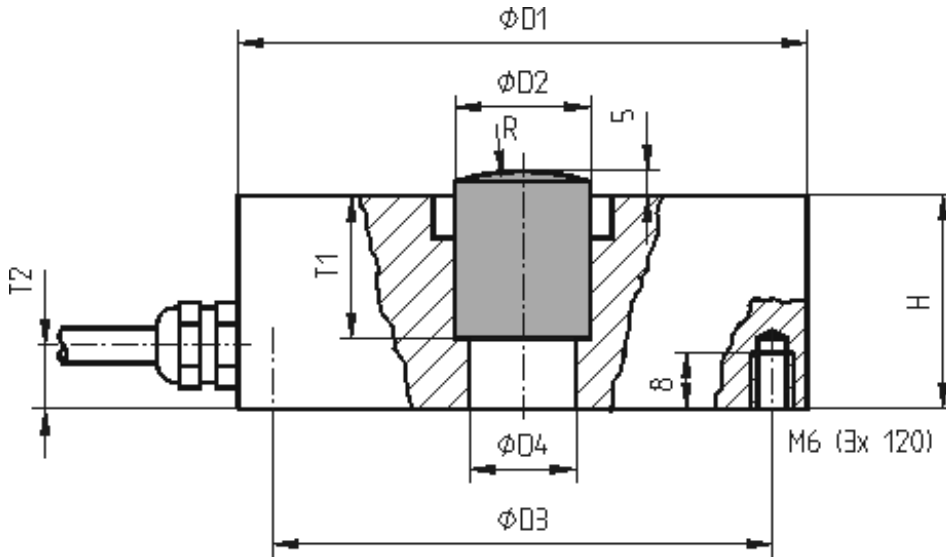
The load cell KR80 is a precision load cell in cylindrical design. It is hermetically sealed by means of welding and available in a calibratable design according to the European requirements OIML R-60 up to class C6. It stands out thanks to its particularly low measurement path of just 0.1mm.

The environmental protection is IP 66.

Force transmission is realised by a cylindrical load knob that has to be inserted into the hole ØD2.

Optionally pendular bases for applications in weighing technology can be installed.

Dimensions





Technical Data

Kraftsensoren

Type	Force sensor
Force introduction	Inner thread
Operating force	150 %FS
Material	Stainless steel
Breaking force	300 %Fn

Elektrische Daten

Input resistance	1110 Ohm
Tolerance input resistance	50 Ohm
Output resistance	1025 Ohm
Tolerance output resistance	25 Ohm
Insulation resistance	>5x10 ⁹ Ohm
Zero signal	2 mV/V

Connection Data

Connection type	4 conductor open
Cable length	3 m

Temperature

Rated temperature range f	-10 ... 40 °C
Operating temperature range f	-30 ... 70 °C
Storage temperature range f	-50 ... 80 °C
Environmental protection	IP66



Pin Configuration

Channel	Symbol	Description	Wire colour	PIN
	+Us	positive bridge supply	pink	
	-Us	negative bridge supply	grey	
	+Ud	positive bridge output	brown	
	-Ud	negative bridge output	white	

Screen - transparent.

accessories

Description Description



Calibration
Certificate
kn/20/5

Factory calibration certificate for force to 20 kN in accordance with DIN EN ISO / IEC 17025 for test materials monitoring according to DIN ISO 9001: 2008 with 5 load levels and 3 series of measurements.



Calibration
Certificate
kn/200/5

Factory calibration certificate for force to 200 kN in accordance with DIN EN ISO / IEC 17025 for test materials monitoring according to DIN ISO 9001: 2008 with 5 load levels and 3 series of measurements.
