

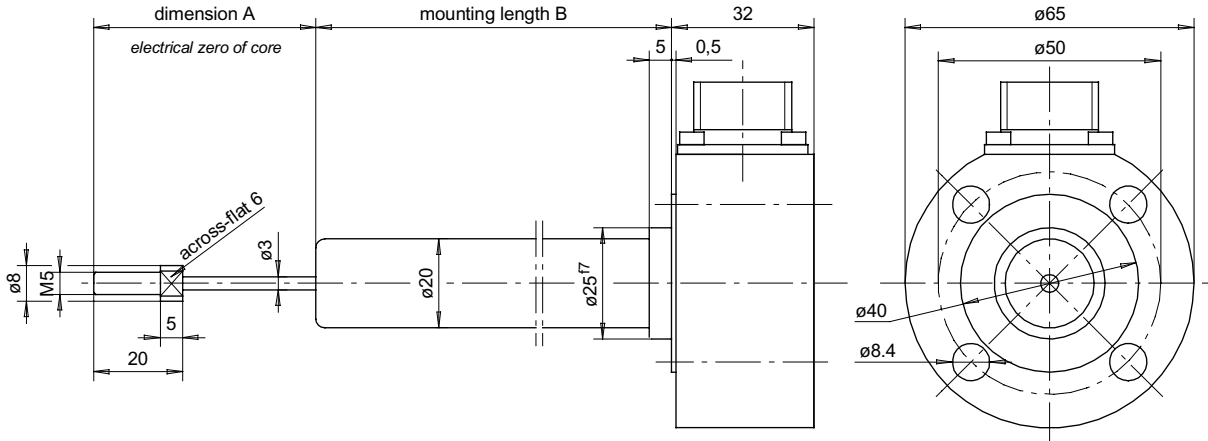


# Inductive Transducer

for hydraulic and pneumatic cylinder applications

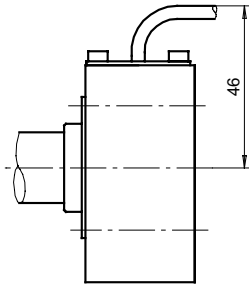
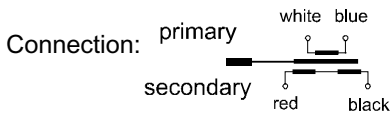
**DPO** (pressure-proof up to 320 bar)

**MESSOTRON**



## radial wire interface

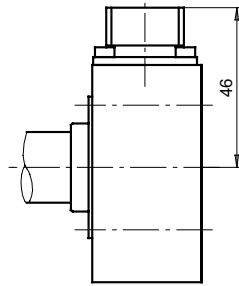
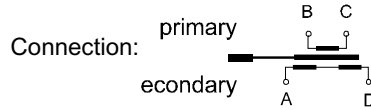
teflon wire 2.5 m long



Example: DPO 500 Q 0.5%

## radial connector interface

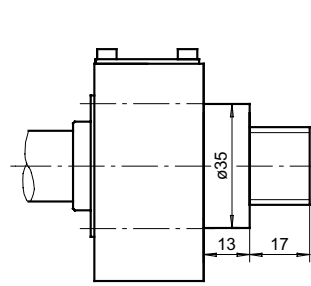
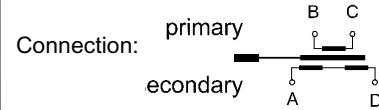
mating connector supplied



Example: DPO 500 R 0.25%

## axial connector interface

mating connector supplied



Example: DPO 500 AX 0.5%

		DPO 400	DPO 500	DPO 600	DPO 800	DPO 1000
Electrical stroke	mm	±200	±250	±300	±400	±500
Max. mechanical stroke	mm	420	520	630	830	1030
Dimension A	mm	230	280	340	440	540
Mounting length B	mm	600	730	860	1120	1400
Transducer weight	g	1600	1800	2000	2400	2800
Plunger weight	g	35	40	50	65	80
Excitation frequency *)		5 kHz option: 10 kHz		5 kHz		
Output signal (5 kHz) (approx..)	mV/V	150	160	175	175	175
Output signal (10 kHz) (approx..)	mV/V	210	250	---	---	---
Excitation voltage		1 ... 5 Veff				
Recommended amplifier		MBI 46.31				
Linearity *)		±0.5% F.S.O.; option: ±0.25%				
Temperature coefficient of zero		±0.04% / 10K				
Temperature coefficient of span		±0.1% / 10K				
Pressure resistance		operating pressure 320 bar, test pressure 450 bar				
Operational temperature *)		-40°C ... +80°C; option: up to 120°C				
Protection class (DIN 40050)		IP 65				

\*) select option when ordering

<p><b>DPO-Series</b> <b>25 ... 1000 mm</b></p>	<p>Drawing <b>28.24.03</b> Page 2</p>
	<p>Date 06/97 Previous issues 28.24.01/02</p>

Design of transducers can be customised

Subject to change without prior notice  
08/99



[www.instrumentation.it](http://www.instrumentation.it)

Via Acquanera 29, 22100 COMO (Italy) tel. +39.031.525391 - fax +39.031.507984 - info@instrumentation.it

**INSTRUMENTATION DEVICES SRL**