

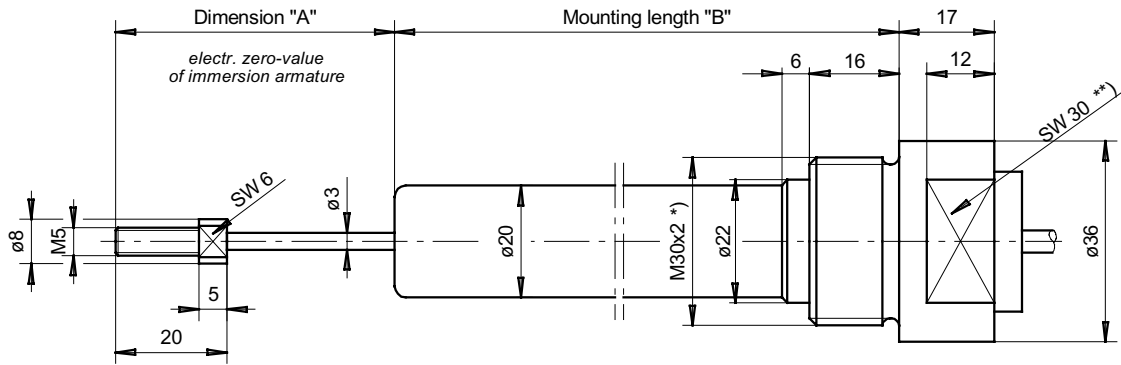


Inductive Bulb Transducer

for cylinder mounting in hydraulics and pneumatics

DGO (pressure tight up to 450 bar)

MESSOTRON



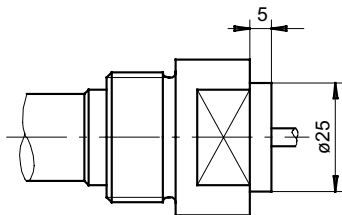
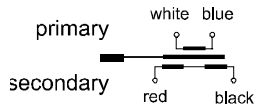
*) Option: M30x1.5

***) Option: Hexagon

Wire interface

teflon wire 2.5 m long

Connection:

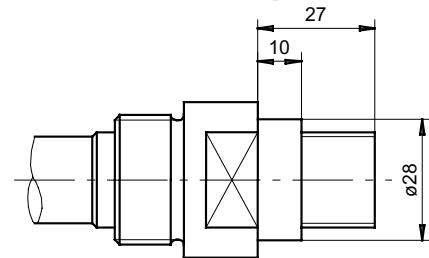
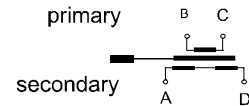


Example: DGO 500 K 0.25%

Connector interface

mating connector supplied

Connection:



Example: DGO 500 AX 0.5%

		DGO 25	DGO 50	DGO 100	DGO 150	DGO 200	DGO 250	DGO 300
Electrical stroke	mm	±12,5	±25	±50	±75	±100	±125	±150
Max. mechanical stroke	mm	30	55	105	160	210	260	320
Dimension A	mm	40	55	80	105	130	155	180
Mounting length B	mm	80	120	160	240	320	400	480
Transducer weight	g	550	600	650	750	900	1000	1150
Plunger weight	g	12	14	16	20	25	28	30
Excitation voltage		1... 5 Veff						
Excitation frequency *)		5 kHz, option: 10 kHz						
Static resolution		virtually infinite						
Recommended amplifier		MBI 46.31						
Linearity *)		±0,5% F.S.O., option: ±0,25%						
Temperature coefficient of zero		±0,04% / 10K						
Temperature coefficient of span		±0,1% / 10K						
Pressure resistance		operating pressure 450 bar; test pressure 500 bar						
Operational temperature *)		-40°C ... +80°C, Option: up to 120°C						
Protection class (DIN 40050)		IP 65						

*) select option when ordering

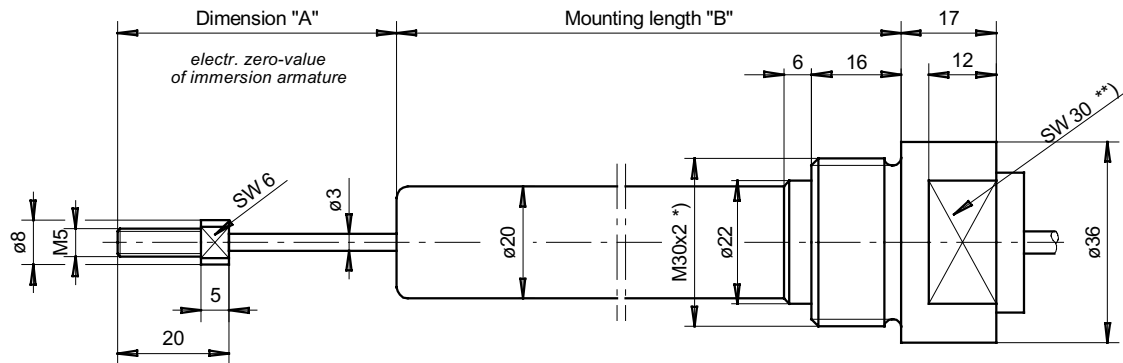
	DGO Series 25 ... 1000 mm	Drawing 28.34.03 Page 1
		Date 03/96 Previous issues 28.34.01/02

Inductive Bulb Transducer

for cylinder mounting in hydraulics and pneumatics

DGO (pressure tight up to 450 bar)

MESSOTRON



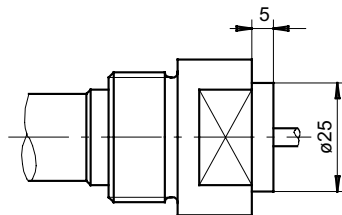
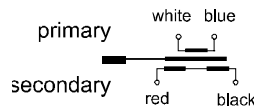
*) Option: M30x1.5

***) Option: Hexagon

Wire interface

teflon cable 2.5 m long

Connection:

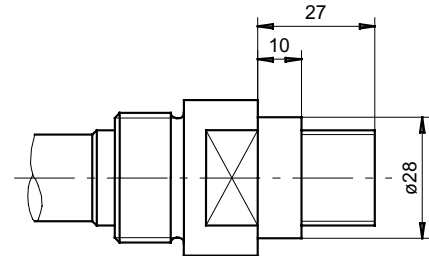
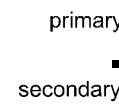


Example: DGO 500 K 0.25%

Connector interface

mating connector supplied

Connection:



Example: DGO 500 AX 0.5%

		DGO 400	DGO 500	DGO 600	DGO 800	DGO 1000
Electrical stroke	mm	± 200	± 250	± 300	± 400	± 500
Max. mechanical stroke	mm	420	520	630	830	1030
Dimension A	mm	230	280	340	440	540
Mounting length B	mm	620	750	880	1140	1420
Transducer weight	g	1350	1500	1700	2100	2600
Plunger weight	g	35	40	50	65	80
Excitation Voltage	1 ... 5 Veff					
Excitation frequency *)	5 kHz option: 10 kHz			5 kHz		
Static resolution	virtually infinite					
Recommended amplifier	MBI 46.31					
Linearity *)	$\pm 0.5\%$ F.S.O.; option: $\pm 0.25\%$					
Temperature coefficient of zero	$\pm 0.04\%$ / 10K					
Temperature coefficient of span	$\pm 0.1\%$ / 10K					
Pressure resistance	operating pressure 450 bar, test pressure 500 bar					
Operational temperature *)	-40°C ... $+80^{\circ}\text{C}$; option: up to 120°C					
Protection class (DIN 40050)	IP 65					

*) select option when ordering

DGO Series 25 ... 1000 mm	Drawing 28.34.03 Page 2
	Date 03/96 Previous issues 28.34.01/02

Design of transducers can be customised

Subject to alteration

