



DATA ACQUISITION SYSTEM

**NEC**

# omniace III

## RA2300 / RA2800

“Measurement by Anybody, at Any Field and Any Time!!”  
The New-Generation Omniace



RA2300

RA2800



- Easy Data Recording at Various Fields!!
- Long-term Recording on Built-in HDD!!



**RA2300**



**RA2800**

The RA2300/RA2800 Omnicore III is a data acquisition device that enables you to acquire/record data with simple operation. Reduced condition setting time and easy measurement can be realized by virtual amplifier setup, a touch-panel and dynamic waveform display on a large LCD. The RA2300/RA2800 features with various measuring modes such as HD Recorder (for long-term recording on a 60GB(RA2300)/40GB(RA2800) HDD) or Memory Recorder (for fast-speed event recording). The RA2300/RA2800 will bring you success in many measuring opportunities such as production line, quality inspection and R&D.

Direct sensor inputs up to 32 channels (16 slots) are available for RA2800 and 16 digital input channels measure diverse signal timing and contact status.

## FEATURES

### ■ Easy pen recorder mode

Easy operation of the "pen recorder" was realized by virtual amp. setup display and touch panel.

Easy measurement of a "pen recorder" is yours without complicated settings.

### ■ Various features at playback mode

Various search functions are available for finding certain points in large data easily after long-term recording. Fast search using a thumbnail bar (displays all recorded data of selected one channel) and jump search(max/min, time, etc.) available.

### ■ Direct input from sensors

Signals from various sensors can be input directly using 11 amplifiers(voltage, strain, temperature, vibration, pressure, rotation pulses, etc.)

### ■ Display input waveform on a large screen

A large 12.1" LCD for better visibility of measured data.

Horizontal and vertical waveform scroll is selectable for RA2800 and this function increases visibility.

### ■ Long-term HDD recording

Long-term & high speed data recording by a built-in 60GB (RA2300)/40GB(RA2800) HDD(data capacity of 120 days when using 16 channels with 10ms sampling speed).

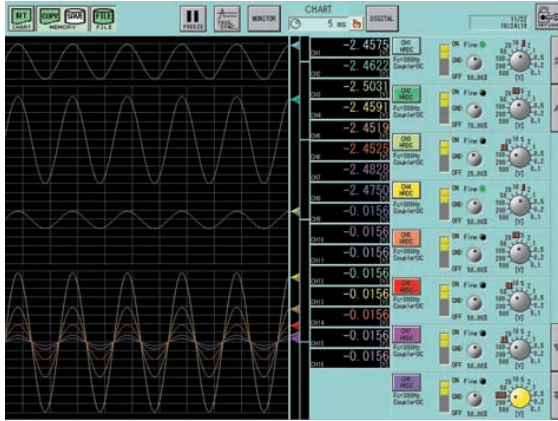
### ■ Standard LAN & USB ports

LAN(100BASE-T) for data communication and USB for external storage devices(USB memories) are standard interfaces.

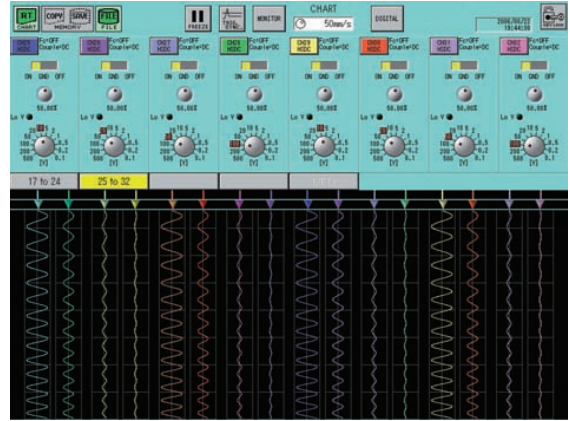
# Supporting Measurement at Various Fields(Operation & Displays)

## Dynamic waveform display

This system has large 12.1 inch LCD and shows dynamic waveforms. Displaying number and dividing waveforms are voluntarily setttable so that various waveforms to every application are available.



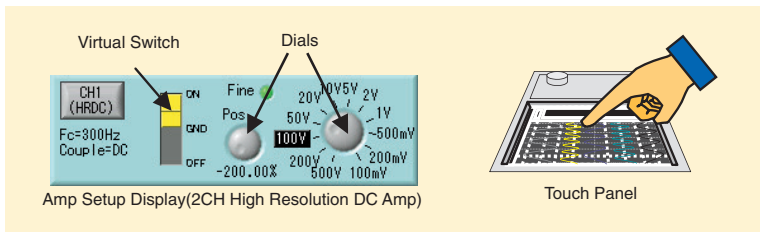
RA2300 Numerical value + amp setup display



RA2800 Image of divided waveforms and vertical scroll

## Easy operation with rich features

Setup displays with virtual mechanical switch or jog dial allows users to understand input amplifier settings easily. By using both 12.1" large LCD and the touch panel, measuring conditions can be modified while monitoring waveforms at the large display. The input amplifier can also be automatically tuned by "auto" button on actual operational panel.



Amp Setup Display(2CH High Resolution DC Amp)

Touch Panel



"Auto" button

Operation Panel

## Direct input from sensors



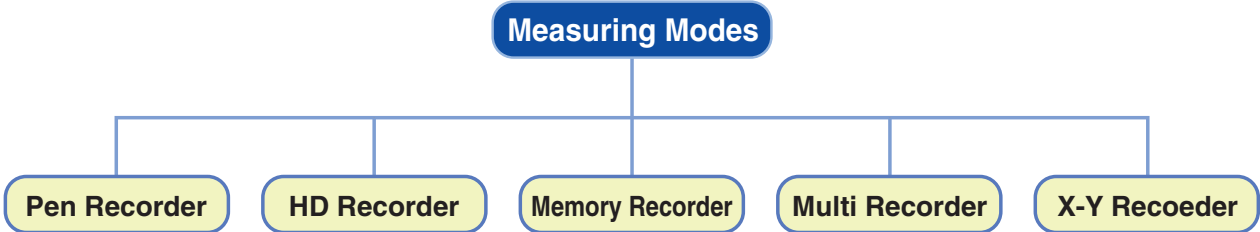
AP Amp Series

11 types of AP amplifiers including voltage, temperature, strain, vibration and frequency ( pulse )are available and they enable every signal to direct input.

| Item                        | Model No  | Sampling              | Resolution | Description  |
|-----------------------------|-----------|-----------------------|------------|--|
| 2-ch High Resolution DC Amp | AP11-101  | 10µs                  | 16-bit     | DC amp for high resolution measurement   |
| 2-ch High Speed DC Amp      | AP11-103  | 1µs RA2300/2µs RA2800 | 12-bit     | DC amp for high speed measurement  |
| 2-ch Zero Suppression Amp   | AP11-111  | 10µs                  | 16-bit     | DC amp for gaining signal changes by eliminating offset element of input signals |
| 2-ch FFT Amp                | AP11-102  | 10µs                  | 16-bit     | DC and vibration amp to prevent high frequency loop-back                         |
| Event Amp                   | AP11-105  | 1µs RA2300/2µs RA2800 | N/A        | Amp for recording open/close for contact or H/L for voltage                      |
| 2-ch TC/DC Amp              | AP11-106A | 10µs                  | 15-bit     | Input amp for thermocouple(R, T, J, K and W) and voltage                         |
| TC/DC Amp                   | AP11-107  | 10µs                  | 14-bit     | 1-ch input amp for thermocouple(R, T, J and K) and voltage                       |
| 2-ch AC Strain Amp          | AP11-104A | 10µs                  | 16-bit     | Strain amp which reduces influence of external noises(AC bridge system)          |
| 2-ch DC Strain Amp          | AP11-110  | 10µs                  | 16-bit     | Strain amp with DC bridge system   |
| 2-ch Vibration/RMS Amp      | AP11-109  | 10µs                  | 16-bit     | DC/vibration amp for measuring signals in RMS                                    |
| F/V Converter               | AP11-108  | 10µs                  | 12-bit     | Amp for converting frequency (pulse) into voltage                                |

# User Selectable Measuring Modes

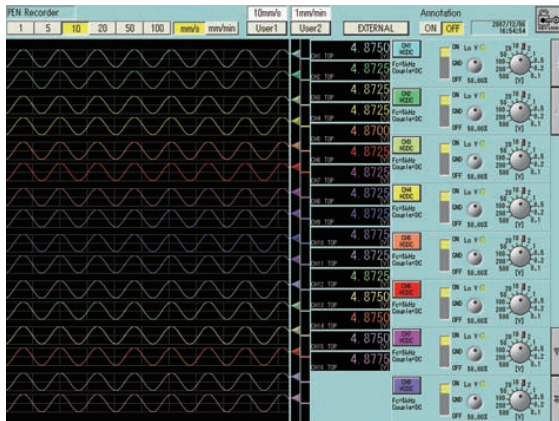
Users can easily select from five (5) Measurement Modes - Pen Recorder mode for real time strip chart recording, HD Recorder mode for long term recording of data to a HDD, X-Y Recorder mode for displaying/recording X-Y correlation of two signals, a Multi Recorder mode captures transients while recording steady-state signals, and a Memory Recorder mode for recording fast events.



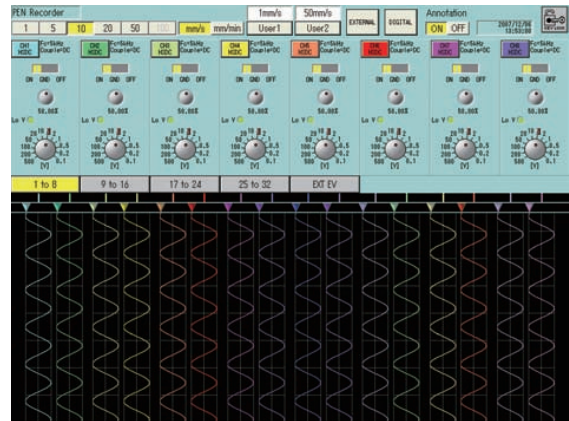
## Easy “Pen Recorder”

The “Pen Recorder” is a measuring mode with simple operation of pen recorders. The waveforms are displayed with “moving nib” images. Also, like pen recorders, amplifier and paper feeding speed\* can be setup on the touch panel.

\* RA2300 chart speed : 100mm/s ~ 1mm/min      RA2800 chart speed : 50mm/s ~ 1mm/min



RA 2300 display sample



RA2800 vertical display sample

## “HD Recorder”: Best for Long-term Recording

Long-term data recording is available on a standard built-in HD(40GB\*1). Fast speed recording can be done at 1μs with 1 channel and at 10μs with 16 channels. Since data is digitally saved, post-record analysis or long-period management of data, which is not an option for recording paper, is possible.

Sample or peak style is selectable in recording. Peak style enables to have faster sampling data with max/min value than recording interval so that it can record data in slow recording interval.

\*1 5GB is occupied by system.

Recordable Time on HardDisk<sup>2</sup>

| Sampling Speed   | 2 GB Capacity <sup>5</sup> |                 |                              | 35 GB Capacity |                 |                              |
|------------------|----------------------------|-----------------|------------------------------|----------------|-----------------|------------------------------|
|                  | w / 1 channel              | w / 16 channels | w / 32 channels <sup>4</sup> | w / 1 channel  | w / 16 channels | w / 32 channels <sup>4</sup> |
| <sup>3</sup> 1μs | 16.7 min                   | N/A             | N/A                          | 4.86 hrs       | N/A             | N/A                          |
| 2μs              | 33.3 min                   | N/A             | N/A                          | 9.72 hrs       | N/A             | N/A                          |
| 5μs              | 1.39 hrs                   | N/A             | N/A                          | 24.3 hrs       | N/A             | N/A                          |
| 10μs             | 2.78 hrs                   | 10.4 min        | N/A                          | 2.03 days      | 3.04 hrs        | N/A                          |
| 20μs             | 5.56 hrs                   | 20.8 min        | 10.4 min                     | 4.05 days      | 6.08 hrs        | 3.04 hrs                     |
| 50μs             | 13.8 hrs                   | 52.1 min        | 26.0 min                     | 10.1 days      | 15.2 hrs        | 7.59 hrs                     |
| 100μs            | 1.16 day                   | 1.74 hrs        | 52.1 min                     | 20.3 days      | 1.27 day        | 15.2 hrs                     |
| 200μs            | 2.32 days                  | 3.47 hrs        | 1.74 hrs                     | 40.5 days      | 2.53 days       | 1.27 day                     |
| 500μs            | 5.79 days                  | 8.68 hrs        | 4.34 hrs                     | 101 days       | 6.33 days       | 3.17 days                    |
| 1 ms             | 11.6 days                  | 17.4 hrs        | 8.68 hrs                     | 203 days       | 12.7 days       | 6.33 days                    |
| 2 ms             | 23.1 days                  | 1.45 day        | 17.4 hrs                     | 405] days      | 25.3 days       | 12.7 days                    |
| 5 ms             | 57.9 days                  | 3.62 days       | 1.81 day                     | 1013 days      | 63.3 days       | 31.7 days                    |
| 10 ms            | 116 days                   | 7.23 days       | 3.62 days                    | 2026 days      | 127 days        | 63.3 days                    |

<sup>2</sup> It's a calculated value by integral number in sampling filing. Recording time will be half in peak filing.

<sup>3</sup> Sampling speed 1μs is available for RA2300 only.

<sup>4</sup> 32ch is available for RA2800 only.

<sup>5</sup> Recording data is saved by every 2 GB for file protection.( in case recording data is set over 2GB)

## “Memory Recorder”: For Fast Event Recording

This mode is for recording fast events with internal memories<sup>\*1</sup>. Unused memories can be utilized, so maximum of 32MW is available for memory recording if used only one channel. Measurements under various conditions are also possible by using many trigger functions.

<sup>\*1</sup> RA2300 memory : fastest 1μs by 2MW/CH      RA2800 memory : fastest 2μs by 1MW/CH

### ● Trigger Mode

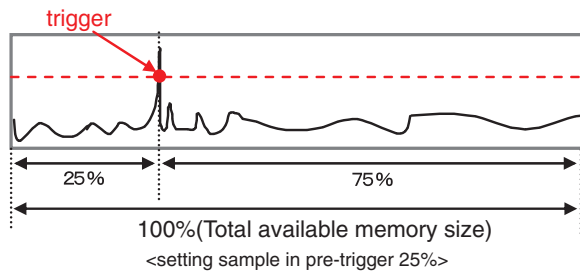
OR : ..... Activates if signal of ANY selected channel reaches trigger level.

AND : ..... Activates if signals of ALL selected channels reach trigger level.

WINDOW :... Activates if signal of selected channel(s) reaches preset level (IN) or gets out of it (OUT).

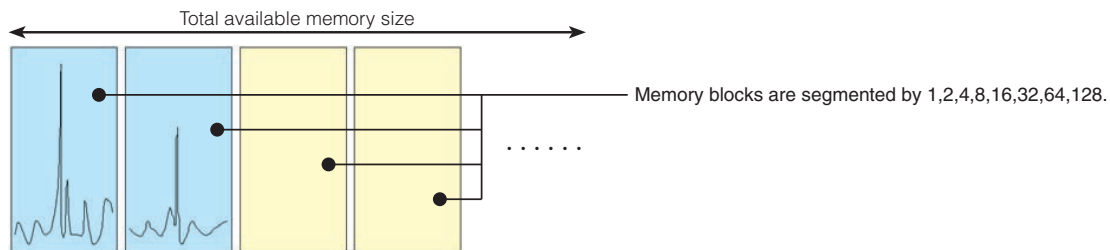
### ● Pre-trigger Function

This function allows user to memory-record data before trigger point. Extent of pre/post trigger point can be preset as proportion of total available memory size.



### ● Memory Block

As memory blocks are segmented, recording time is segmentalized and several recording functions are repeatable.



Recordable Time on Memories<sup>\*2</sup>

| Sampling Speed    | w / 1 ch  | w / 16 chs  | w / 32 chs <sup>*4</sup> |
|-------------------|-----------|-------------|--------------------------|
|                   | (32 MW)   | (2 MW / ch) | (1 MW / ch)              |
| <sup>*3</sup> 1μs | 33.6 sec  | 2.10 sec    | N/A                      |
| 2μs               | 1.12 min  | 4.19 sec    | 2.10 sec                 |
| 5μs               | 2.80 min  | 10.5 sec    | 5.24 sec                 |
| 10μs              | 5.59 min  | 21.0 sec    | 10.5 sec                 |
| 20μs              | 11.2 min  | 41.9 sec    | 21.0 sec                 |
| 50μs              | 28.0 min  | 1.75 min    | 52.4 sec                 |
| 100μs             | 55.9 min  | 3.50 min    | 1.75 min                 |
| 200μs             | 1.86 hrs  | 6.99 min    | 3.50 min                 |
| 500μs             | 4.66 hrs  | 17.5 min    | 8.74 min                 |
| 1 ms              | 9.32 hrs  | 35.0 min    | 17.5 min                 |
| 2 ms              | 18.6 hrs  | 1.12 hrs    | 35.0 min                 |
| 5 ms              | 1.94 day  | 2.91 hrs    | 1.46 hrs                 |
| 10 ms             | 3.88 days | 5.83 hrs    | 2.91 hrs                 |
| 100 ms            | 38.8 days | 58.3 hrs    | 29.1 hrs                 |

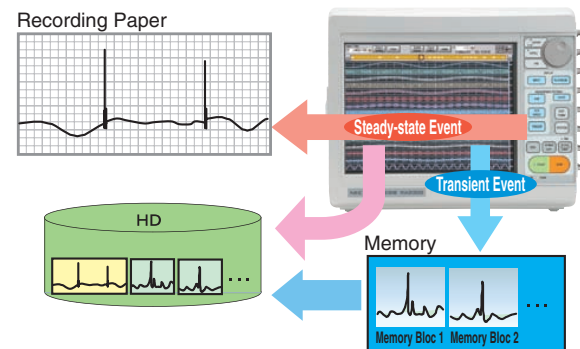
<sup>\*2</sup> It's a calculated value by integral number in sampling filing. Recording time will be half in peak filing.

<sup>\*3</sup> Sampling speed 1μs is available for RA2300 only.

<sup>\*4</sup> 32ch is available for RA2800 only.

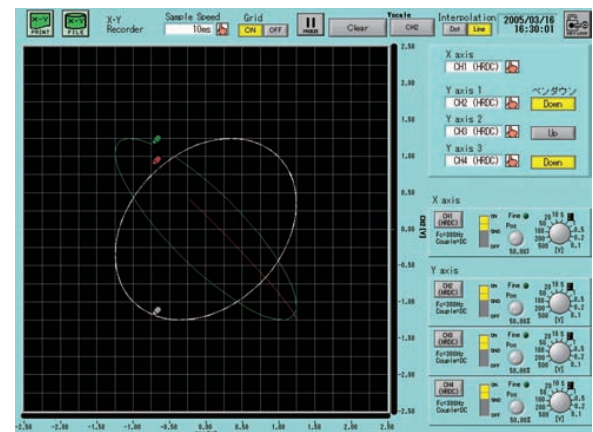
## “Multi Recorder”: Records Steady-state & Transient Events Simultaneously

Chart printing, and recording to HDD and Memory can be simultaneously performed in this mode. A steady-state signal can be printed or recorded on the HDD while the system captures high-speed transient events to memory.



## “X-Y Recorder”: Displays Correlation of Two Physical Values

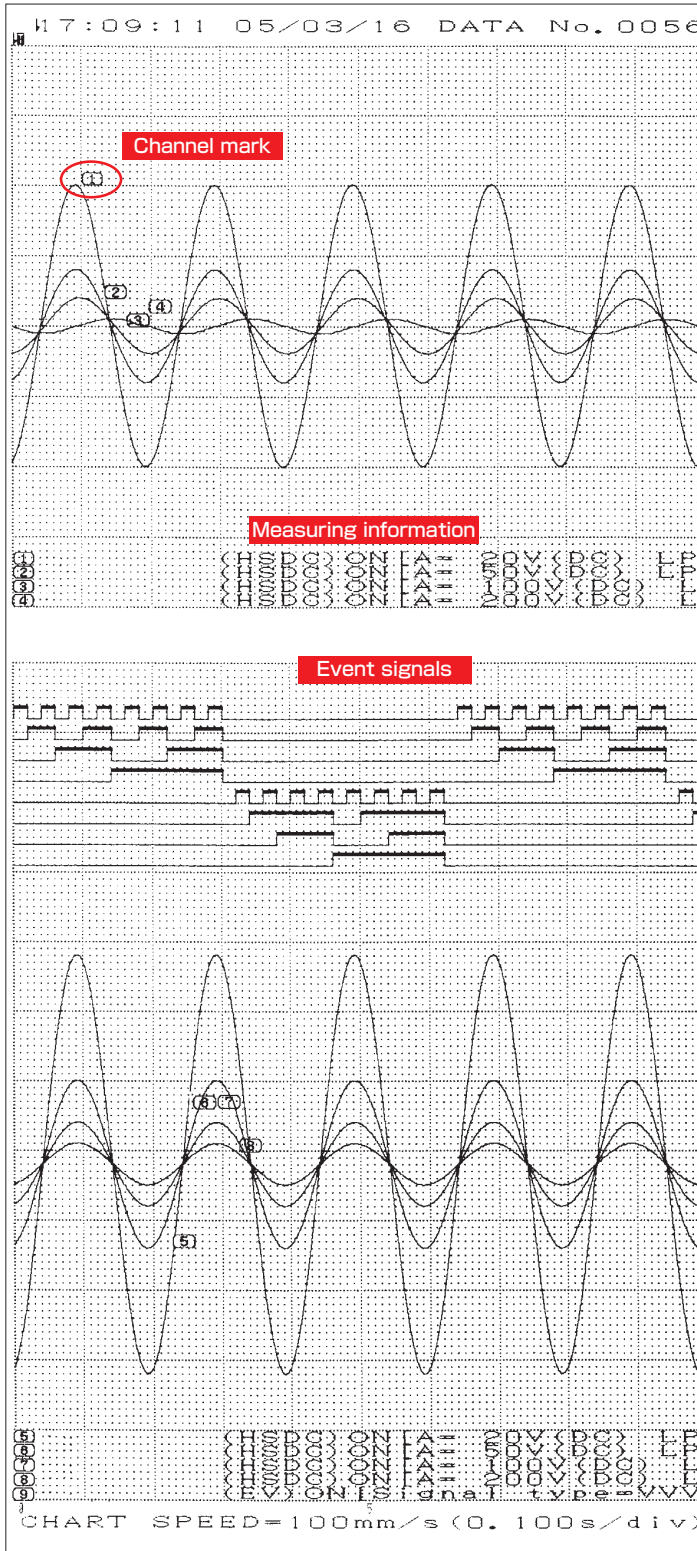
Select any channel as the X input and up to 3 channels for the Y input. Signals are recorded and can be plotted for display and printing with high resolution( 1600 x 1600 dots).



# High Speed & High Resolution Recording

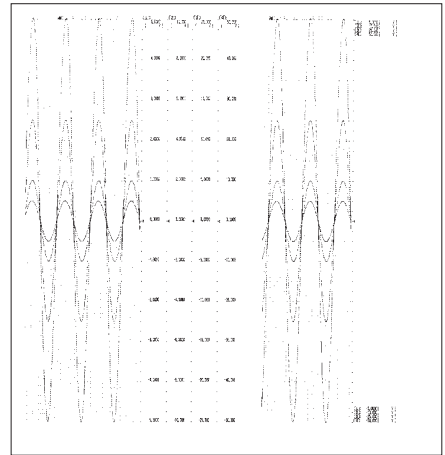
- High speed\* and high resolution(80 dots/mm at 25mm/s) recording is available.
- Customizable waveform division & printing size.
- Location and amplitude of digital signals can be changed by 8 channels.

\* Paper-feed speed of RA2300 is max 100mm/s and that of RA2800 is max 50mm/s.



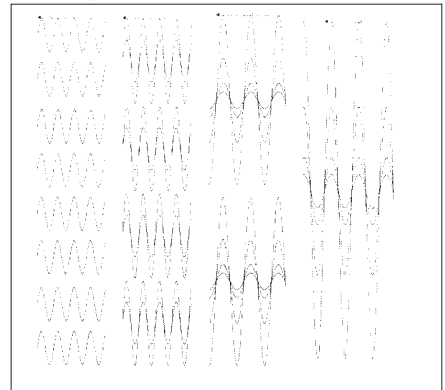
## ● Auto Scaling

Scales can be printed after waveforms.



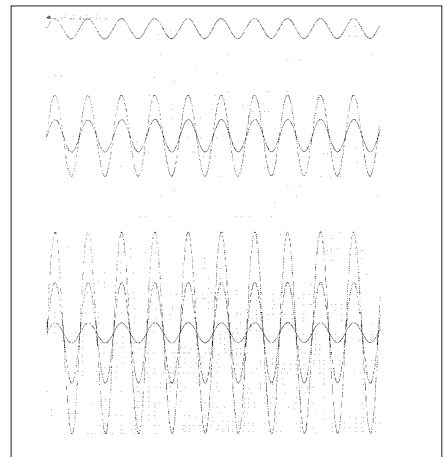
## ● Waveform Division

One to sixteen divisions can be selected to display or print out.



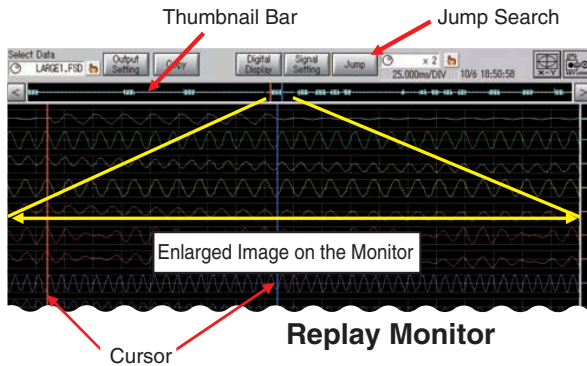
## ● Customizable Width Size

Users can print waveform at selected width( 10 mm to 200 mm ).



## Various Features (Replay Monitor)

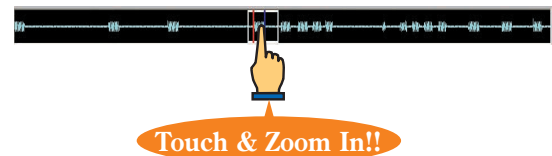
### Easy Search of Large Data



Below functions are available for searching long-term and large data easily.

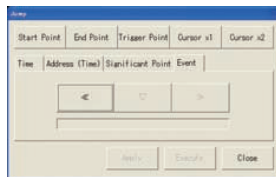
#### Thumbnail Bar :

This function displays a waveform image (one selected channel) of recorded data on a thumbnail bar. It does not only allow users to see whole waveform image easily but to get enlarged by touching.

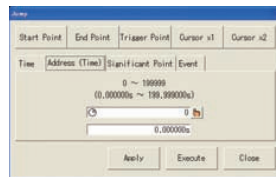


#### Jump Search :

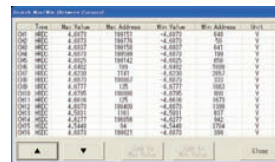
There are four jump search modes as followings.



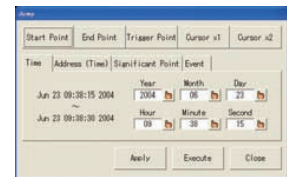
■ Event...  
Move to marked event



■ Address(Time)...  
Move to elapsed time from start



■ Max/Min...  
Move to max/min of recorded data



■ Time...  
Move to specified time

## Useful Functions

### Saving Large Data on External Devices

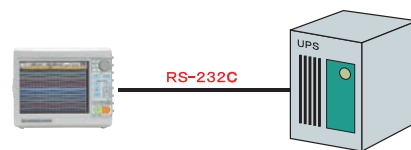
RA2300/2800 has two USB ports as standard. Measured data can be saved on external storage devices via USB.



### Automatic Shutdown at Blackout

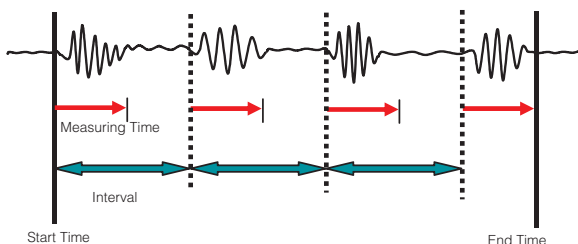
By connecting to uninterruptible power supply (UPS), RA2300/2800 will be automatically shut down at blackout. If power failure occurs during long-term measuring, RA2300/2800 will receive a signal from UPS and power itself off after regular shutdown.

\*\*\* This function requires an optional RS-232C Unit.



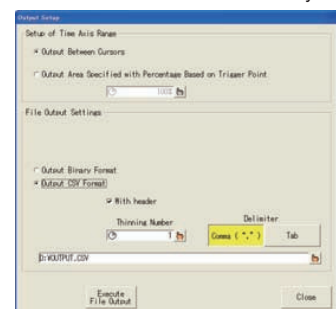
### Timer-control Function

Automatic measurement with preset time and interval.



### CSV File

RA2300/2800 can convert measured data into CSV file for analysis using Excel or other analysis software. It has functions like thinning out and batch conversions.

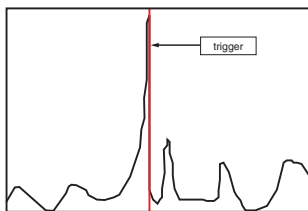
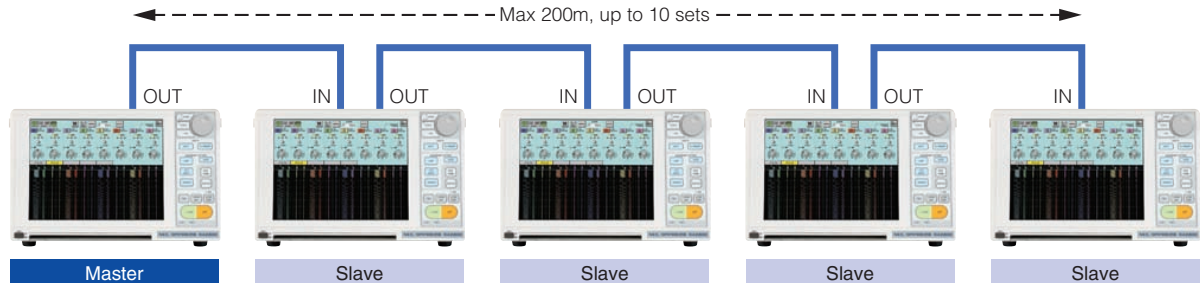




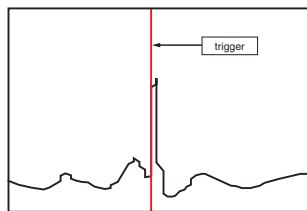


## Multiple Unit Synchronization – Model RA28-111 (Model RA2800 units only)

The Model RA28-111 Synchronization option allows multi-channel memory recording among multiple connected Model RA2800 units. Up to 10 units can be daisy chain connected to expand channel capacity to 320 channels. One unit is a master and the others are slaves. All recorded data is time synchronized with the sampling clock of the master unit.



Master memory data sample

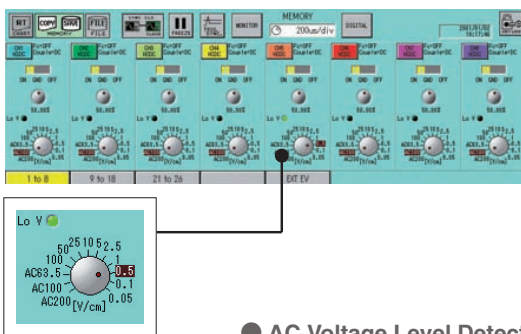


Slave memory data sample

The high speed, multi-channel time synchronized data recorded by the RA2800 master and slave units is also simultaneously triggered. The trigger signal to simultaneously start and end memory recording in all units can be generated by either the master or any slave unit.

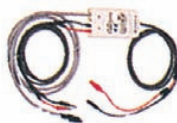
The Unifizer Model 3000 series remote control software is recommended for multi-unit synchronization applications.

## DIV Sensitivity Unit - Model RA28-112 (Model RA2800 units only)



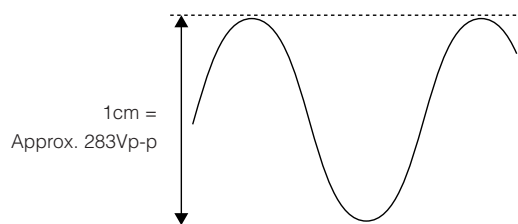
● AC Voltage Level Detector 1540/1543

These external devices detect 100/120V & 220/240V voltage sags & surges exceeding selected 10% or 20% of AC peak value. A Model 1539 AC/DC Multi-Range Voltage Detector (not shown) that detects presence or absence of selected low or high voltages is helpful in determining system timing sequences. All detector outputs are ideal for use with all RA series recorder EventLogic inputs.



Recording electrical power signals and displaying the results in an electromagnetic oscillograph format is provided using the RA28-112 software. Simply set the recorder V/cm range sensitivity to AC220V/cm, AC100V/cm, or AC63.5V/cm range to display or print a true sine wave AC voltage amplitude at 1cm/p-p per channel.

Input = AC100V; Range = 100V/cm



## Utility Software for General Data Display and Conversion - Model RA23-701

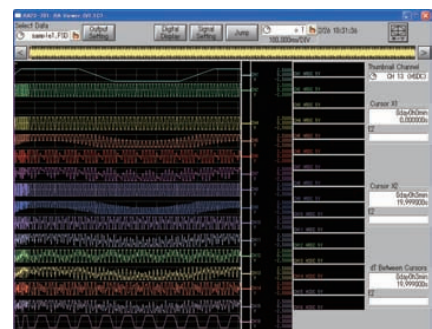
(Download this software free after completing User Registration)  
Use the Model RA23-701 software to enhance PC viewing of data recorded on any RA1000 or RA2000 series Data Acquisition Recorder.

### ● Display of Data on PC

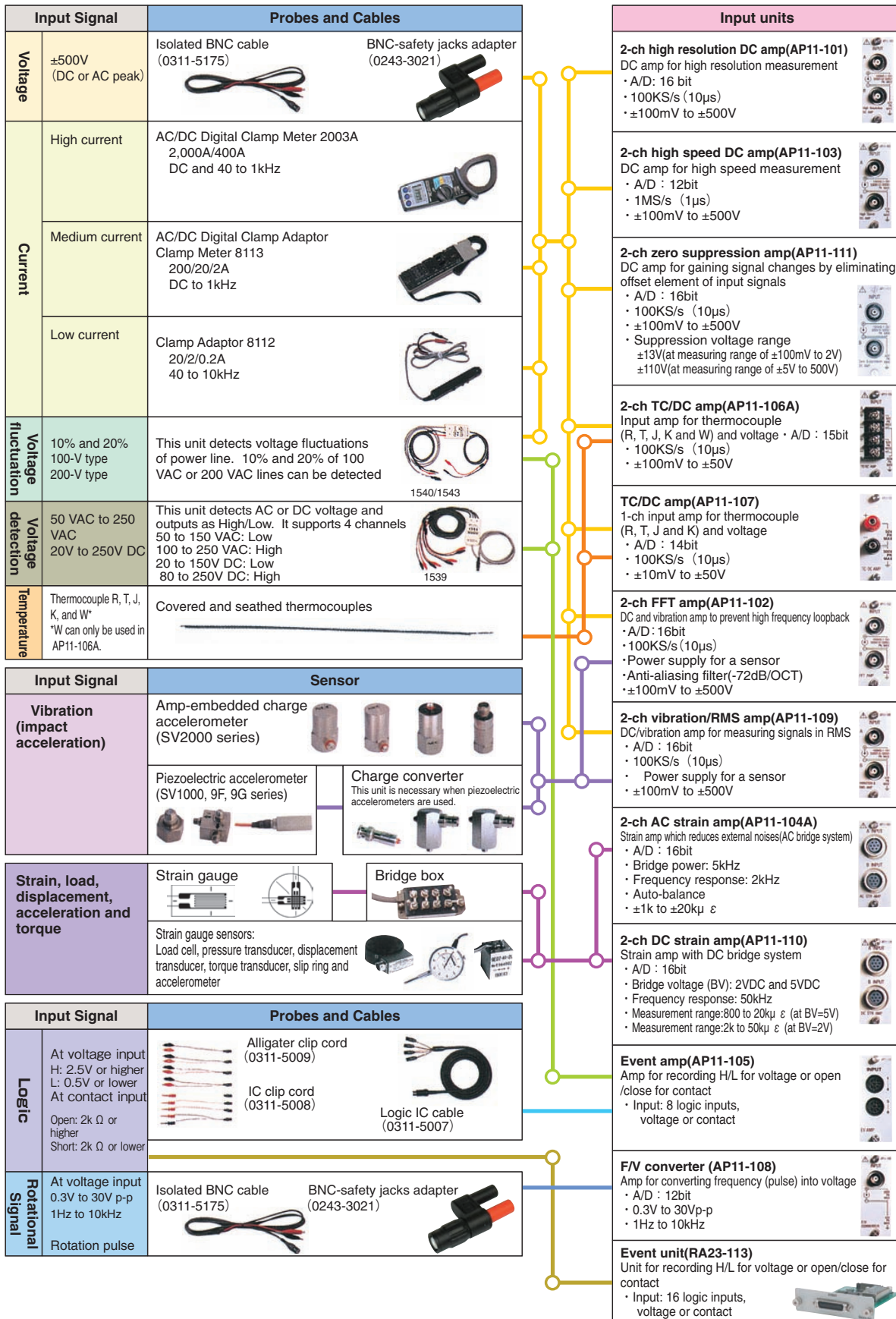
Display recorder display screen on PC monitor, enlarge time axis, scale x100 to x1/100, search (jump functions: time, address, event, & particular point), and readout of cursor data values.

### ● File Conversion

Converts recorded data into Binary or CSV file formats.



# Input Unit Selection Block Diagram



# Basic Specifications

## Basic Specifications

|                           |   |
|---------------------------|---|
| Display                   | 12.1-inch TFT color LCD<br>Effective screen area : 245.76mm x 184.32mm (1024 x 768 pixels)  |
| Channel                   | RA2300 : 16ch ( 8 slots ) + digital input 16ch (optional)<br>RA2800 : 32ch (16 slots) + digital input 16ch (Cable is optional)  |
| Printer                   |   |
| Printing Method           | Thermal printing using a thermal head   |
| Paper Width               | 219.5mm   |
| Effective Recording Width | 1 division (200mm ÷ FS) to 16 division (10mm ÷ FS), number of division and printing width can be changed.   |
| Channel Discrimination    | Prints channel number in the vicinity of the printed waveform. The ON/OFF function is available.  |
| Grid Pattern              | Standard (10mm, 5mm), 10mm, 5mm, No grid  |
| Battery Backup            | RA2300 : Clock, Setting value: approx 3 to 5 years (using a primary battery)<br>RA2800 : Clock, Setting value: approx 3 years (using a primary battery)                               |
| Storage Device            | 40GB Hard Disk Drive (HDD) , USB memory,  |
| Interface                 | Ethernet, USB-standard *** Ethernet has basis over CAT5 (shielded)<br>RS-232C, Remote terminal : optional   |
| Compatible specifications | EMC: EN1326 A1/A2/A3<br>Safety: EN61010-1   |
| Operating Environment     | Temperature: 5 to 40 °C, Humidity: 35 to 80 %RH (without condensation)  |
| Power Supply              | 90 to 264VAC, frequency 50 to 60Hz  |
| Power Consumption         | RA2300 : 100VA (typical) : with AP11-101 x 8 units (approx 300VA max)<br>RA2800 : 170VA (typical) : with AP11-103 x 16 units (approx 350VA max)                                       |
| Dimensions                | RA2300 : Approx. 369.5(W) x 164.5(H) x 301(D) mm<br>RA2800 : Approx. 400(W) x 270(H) x 380(D) mm  |
| Weight                    | RA2300 : 8.0kg or less(main body only), 8.7kg or less(main body with AP-11-103x4 units)<br>RA2800 : 16.4kg or less(main body only), 18.8kg or less(main body with AP-11-103x16 units) |

## Communication & Storage Specifications

|                          |  |
|--------------------------|--|
| HDD                      |  |
| Function                 | Setting conditions of main unit and save/read out of measured data           |
| Capacity                 | 40GB (system domain 5GB + data storage space 35GB)                           |
| Ethernet                 |  |
| Function                 | Control with communication command, Windows and file sharing with Windows PC |
| Standard                 | 10/100 BASE-T  |
| USB                      |  |
| Function                 | Data saving on storage device by USB connection                              |
| Standard                 | 1.1  |
| Available Storage Device | USB memory   |

## Trigger Specifications

|                           |  |
|---------------------------|--|
| Trigger Mode              | OR, AND, WINDOW, OFF   |
| Trigger Source            | Input signal, Manual trigger, External trigger   |
| Trigger Settings          | Amps other than Event Amp<br>Trigger slope : OR, AND ... ↑ or ↓ , WINDOW ... OUT or IN<br>Level setting : To be set with physical values(e.g.voltage)<br>Event Amp (AP11-105), main unit event (option for RA2300)<br>State setting : H, L, or X can be set for each input. When X is set, trigger condition is not applied.<br>Trigger setting : AND or OR of state setting conditions of inputs from 1 to 8. |
| Trigger Related Functions |  |
| Trigger output            | Output signal when trigger conditions are met ( TTL Law active Hover 2V, L below 0.8V Pulse width : approx 10 ms)  |
| Pre-trigger               | 0 to 100% ( 1% step )  |
| Trigger mark              | Record trigger point with an arrow ( ↓ ) and print print year, date and time trigger occurred.   |
| Trigger filter            | 1 to 65534 samples   |

## Measuring Mode (Acquisition/Recording) Specifications

|  |   |
|--|---|
| Pen Recorder                                   |   |
| Waveform Printing                              |   |
| Function                                       | Printout input signal data on recording paper (waveform)  |
| Measurement Starting Operation                 | Start with pressing START key or preset time. Interval recording available.   |
| Paper-feed Speed                               | RA2300 : 100 mm/s to 1 mm/min (user setting, external synchronization enabled)<br>RA2800 : 50 mm/s to 1 mm/min (user setting, external synchronization enabled) |
| Frequency Response                             | DC to 100 kHz (sampling : 10 points/cycle).Varies by input units.   |
| Printing Density                               | Voltage axis : 8 dots/mm, Time axis : 80 dots/mm (at 25 mm/s)   |
| Printing Length                                | Continuous  |
| Data Backup                                    | N/A   |
| HD Recorder                                    |   |
| Data Recording                                 |   |
| Function                                       | Real-time recording of measured data on HD (sample of peak style is selectable)   |
| Recordable Size                                | 35GB max  |
| Measurement Starting Operation                 | Start with pressing START key, trigger detection or preset time.  |
| Sampling Speed                                 | RA2300 : 1μs (w/1ch), 5μs (w/8ch), 10μs (w/16ch) max<br>RA2800 : 2μs (w/1ch), 10μs (w/16ch), 20μs (w/32ch) max  |
| Recording Method                               | Normal or Ring recording (repeated recording during preset time) selectable.  |
| Waveform Printing (Refer to Pen Recorder spec) |   |
| Function                                       | Printout input signal data on recording paper (waveform)  |
| Measurement Starting Operation                 | ON/OFF of printout to recording paper while HD recording  |

## Memory Recorder

|                       |  |
|-----------------------|--|
| Data Recording        |  |
| Function              | Record measured data on memory in main unit.   |
| Measurement Operation | Once, Repeat, or Endless   |
| Memory Capacity       | RA2300 : 2MW/ch (w/16ch), 32MW/ch (w/1ch)<br>RA2800 : 1MW/ch (w/32ch), 32MW/ch (w/1ch)   |
| Memory Division       | 1, 2, 4, 8, 16, 32, 64 or 128 divisions  |
| Sampling Speed        | RA2300 : 1μs to 100s (user setting, external synchronization enabled)<br>RA2800 : 2μs to 100s (user setting, Sampling is synchronized with RA28-111) |
| Waveform Printing     |  |
| Function              | Printout input signal data on recording paper (waveform)   |
| Printing Density      | Voltage axis : 8 dots/mm, Time axis : 10 dots/mm   |
| Copy Magnification    | x5 to x1/1000  |
| Memory Filing         | Data is saved on the memory device in binary or CSV format every time when it is stored in memories.   |
| Data Backup           | Memory backup with HDD (data saved in a specified area of HDD at shutdown)   |
| Save / Copy Area      | Copy with trigger at center : 1 to 100% (1% step), copy between two cursors.   |

## Multi Recorder

|                 |   |
|-----------------|---|
| Function        | Steady-state and transient events can be recorded simultaneously on HD, memory and/or recording paper |
| Pen Recorder    | Refer to Pen Recorder spec  |
| HD Recorder     | Refer to HD Recorder spec   |
| Memory Recorder | Refer to Memory Recorder spec (waveform printing available)   |

## Measuring Mode (Acquisition/Recording) Specifications

|                                  |   |
|----------------------------------|---|
| X-Y Recorder                     |   |
| Function                         | ON/OFF of locas enabled (pen up & down)   |
| Axis Setting                     | Input signal monitor, freeze, copy and X-Y display during data recording available. |
| Measuring Speed                  | 1ms to 1s   |
| Data recording                   |   |
| Function                         | Record all input signals (if input channels is ON at amp setting display) on HD.    |
| X-Y waveform Printing (Printout) |   |
| Function                         | Printout displayed waveforms (X-axis : 1ch, Y-axis : 3ch) at A4 size                |
| Resolution                       | 1600 x 1600 dots (at printout), 650 x 650 dots ( at display)                        |

## Measured Data Display (Replay Monitor) Specifications

|                          |  |
|--------------------------|--|
| Function                 | Display recorded data at X-T or X-Y when pressed "Replay" button on operation panel. |
| Available Measuring Mode | All (irrelevant to actual measuring mode)  |
| Y-T Display              |  |
| Waveform Division        | 1 to 16 divisions  |
| Display Magnification    | x 100 to x 1/10,000 (***) Peak style is not enlarged)                                |
| Thumbnail Function       | Display whole data of selected one channel on a thumbnail bar                        |
| Numeric Display          | Numeric value, cursor value, numeric + cursor values (by switching over)             |
| Search Function          | Search by cursor, time, address, max/min and event                                   |
| X-Y Display              |  |
| Channels Allowed         | Up to 1ch/X-axis and 3ch/Y-axis can be displayed (to be selected by user)            |
| Data Output              | On file and printing paper   |
| Output File Format       | Binary or CSV data   |

## Output Specifications

|                                 |   |
|---------------------------------|---|
| Printer                         |   |
| Data Information                | Measuring mode, year/month/day, measurement start time, data No., trigger conditions(trigger point, trigger date, trigger time), sampling speed, paper speed, time axis can be printed with waveforms. ON/OFF selectable.   |
| Channel Information             | Print input unit settings when saved. ON/OFF selectable.  |
| Mark Print                      | Pen-Recorder, HD-Recorder, mark (date/time) print   |
| Screen Copy                     | Print screen image on recording paper   |
| Line Width for Printing         | Select base line boldness for each channel ( 1, 2, 3, or 4 dots)  |
| Auto Function                   |   |
| Function                        | By pressing "Auto" button on an operational panel, sampling speed and input range are auto-configured in reference to input signal.   |
| Auto sample                     | Display speed, paper feed speed memory sampling speed are auto-configured   |
| Auto range                      | Range in input amps is auto-configured. (Except for event amp : AP11-105)   |
| Timer Function                  | Start time, end time and interval can be set.   |
| CSV conversion                  | Available (also batch conversion of multiple memories or files)   |
| Screen Image Saving             | Save screen image on HDD at BMP format (colored)  |
| Monitor output                  | Images on LCD are output to monitor by XGA (1024 x 768 dots) : RA2800 only  |
| Save/Readout of Settings        | Save up to 4 settings (input and main unit settings conditions) on HDD.   |
| Keypad Function                 | Void key input to prevent operational error (password protected)  |
| Physical Value Conversion       | Physical conversion of input signals, full scale change on display, registration of units.  |
| Waveform Display of Event Input | Display position of event amp (AP11-105) and main unit (option for RA2300) is movable. (every 8ch, standard position and pitch are configurable. In case of RA2800 with event amps, 8 units are available for display and recording at the same time. (16 units are available for data recording) |

## Optional Unit AC Bridge Power Supply Unit (RA23-116)

|                             |   |
|-----------------------------|---|
| Function                    | Bridge power source for 2-ch AC strain amp  |
| Power Voltage, Carrier Wave | 2Vrms, sine wave 5kHz   |
| Synchronization             | Synchronization with other RA2300s using built-in AC bridge power units is available. |
| Weight                      | 60g or less   |

## RS-232C Unit (RA23-114)

|                |  |
|----------------|--|
| Standard       | JIS X5101 (former C6351) complied        |
| Transfer speed | 38400, 19200, 9600, 4800 or 2400bps      |
| Connector      | D-sub 9-pin connector                    |
| Function       |  |
| Shutdown       | Shutdown operation when using UPS        |
| Remote Control | Remote Control from PC via RS-232C cable |
| Weight         | 50g or less                              |

## Remote Unit (RA23-112)

|          |   |
|----------|---|
| Function | Start, Stop, Mark print, Paper feed is possible by the external signal. Input synchronization pulse. Output error signal. Input UPS protect signal. |
| Cables   | 1.5m, I/O connector 28-pin and open wire.   |
| Weight   | 65g or less   |

## Event Unit (RA23-113) <sup>1)</sup>, Event Unit A (RA23-113A) : RA2300 Only

|                   |  |
|-------------------|--|
| Function          | Input logic signal directly into main unit (independent from other amps)                       |
| Number of signals | 16   |
| Input Signals     | Voltage input : input voltage range 0 to +5 V  |
| Signal level      | H : over 2.0V, L : below 0.8V  |
| Cables            | RA23-113 : Event Input Cable (0311-5252)<br>RA23-113A : Event Input Extension Cable (RA23-127) |
| Weight            | 60g or less  |

## Event BOX Set (RA23-129) : RA2300 Only

|                   |  |
|-------------------|--|
| Function          | Input logic signal directly into main unit (independent from other amps)   |
| Number of signals | 16   |
| Input Type        | Common ground in unit, case-free   |
| Input Signals     | Sets voltage or contact for each channel<br>Voltage input : input voltage range 0 to +24 V<br>Detection level : H level 2.5V or higher<br>L level 0.5V or higher |
| Response Time     | Contact input : open 2k Ω or higher, close 250 Ω or lower  |
| Input Connector   | Within 1μs (at input "H", level +5V or higher)<br>Circular DIN connector 8P x 4, Event Amp Unit side : XT28-080 (conformity with DIN45326)                       |

<sup>1)</sup> Event unit (RA23-113, RA23-113A)

The difference of unit style is only standard cables(0311-5252 or RA23-127) . Units have same specifications. Regardless of styles, 「RA23-113」 is printed on units.

**Option Unit  
Arithmetic FFT Unit (RA23-751)**

|                                  |   |
|----------------------------------|---|
| Object data                      | Internal memory data, filing data (extension : DRT, FSD) % except for peak style (extension : FPP, IDX)   |
| Interval statistical calculation |   |
| Calculation                      | max, min, P-P value, average, square, actual value, standard deviation, rising time, trailing time  |
| Out put file format              | CSV data  |
| Functional calculation           |   |
| Calculation                      | four arithmetic operations (+, -, x, /), absolute value, first derivation, second derivation, first integration, second integration, square root, index, common logarithm, moving average, trigonometric function (sin, cos, tan, asin, acos, atan) |
| Out put file format              | Binary or CSV data  |
| FFT Analysis                     |   |
| Function                         | One signal analysis : linear spectrum, Power spectrum, RMSpectrum, power histogram density, octave analysis (1/1, 1/3)<br>Two signal analysis : transfer function, cross power spectrum, coherence function   |
| Analyzed data length             | 1000 (400), 2000 (800), 4000 (1600)   |
| Window function                  | rectangular, hanning, hamming   |
| Out put file format              | Binary or CSV data  |

**Unifizer NS3100 (online function, offline function)**

|   |   |
|---|---|
| OS  | Windows 2000 / XP / Vista Ultimate  |
| Available system                              | RA2300/RA2800/RA1100/RA1200/RA1300/others   |
| Interface                                     | RA2000 series : Ethernet<br>RA1000 series : RS-232C / Ethernet  |
| Connectable quantity                          | MAX 8 sets(RA2000series/RA1000series/others mixable)  |
| Remote control                                | Pen recorder mode/HD recorder mode/Memory recorder mode/Multi recorder mode(RA2000 series)<br>Memory mode/Real time mode/Transit mode/Filing mode(RA1000 series)  |
| Setting range of transfer speed               | RA series : 1ms ~ 1000ms(1msSTEP), 1s ~ 1000s(1sSTEP) <sup>1)</sup><br>Max recordable time: up to the half size of specified HD in PC<br>** It may not transfer in set speed depending on CPU speed.<br>Recommended CPU : over 2GHz<br>Recommended memory capacity : over 512MB <sup>2)</sup>   |
| Real time data display function               | Y-T waveform, X-Y waveform(split/overwriting), Digital display <sup>2)</sup>  |
| Play data display function                    | Y-T waveform, X-Y waveform(split/overwriting), Digital display<br>Data of RA2000 series/RA1000 series is playable<br>Playable extension: FSD, FPP, DRT, DAT <sup>2)</sup>   |
| Cursor readout of playing data                | Readout value between cursor 1 and 2, time difference, amplitude difference, max/min value between cursors  |
| Arithmetic operation                          | Arithmetic operation between channels, Power method, Square root, Absolute value, Customary logarithm, Index, actual value, Trigonometric function, Moving average, Derivation, Integration, Below functions are combined together _<br>Sine, Cosine, Tangent, Arcsine, Arccosine, Arctangent, Absolute value, Index, Logarithm natural, Customary logarithm, Square root, Cube root, Arithmetic operation CH specification, Power method, First-order derivation, Second-order derivation, First-order integration, Second-order integration, Saved data reference 1, Saved data reference 2, Moving average |
| File conversion                               | Conversion into CSV file following condition can be set<br>- Specification of conversion area point, of period(us, ms, sec), of time<br>- Conversion channel<br>- Break character _ comma( , ), TAB<br>- Thinning out, simple, max/min value, average value, peak value<br>- Adding of header information<br>- Saved file name  |
| Saving and reading of recorded file condition | Available for arbitrary files   |

The detail is listed in Unifizer NS3000 series catalogue.

**Sensitive DIV unit (RA28-112) : Application for measuring electricity : RA2800 only**

|                      |   |
|----------------------|---|
| Amplifier            | High resolution DC amplifier : AP11-101<br>FFT amplifier : AP11-102 (V measuring mode)<br>High speed DC amplifier : AP11-103(vibration)<br>RMS amplifier : AP11-109 (V measuring mode)<br>Zero suppression amplifier : AP11-111 |
| Sensitivity display  | AC200V/cm, AC100V/cm, AC63.5/cm, 100V/cm, 50V/cm, 25V/cm, 10V/cm, 5V/cm, 2.5V/cm, 1V/cm, 0.5V/cm : Max input voltage $\pm 500V$<br>0.1V/cm, 0.05V/cm: Max input voltage $\pm 100V$  |
| Amplitude adjustment | All range _ fine adjustment of recording amplitude<br>AC range _ fine adjustment in AC range  |
| Waveform recording   | Waveform division 1/1 fixed (1 scale is 1cm on recording papers)  |
| Grid                 | 10mm standard, 10mm, 10mm longitudinal, OFF switch, (NO 5mm grid)<br>1cm x 1cm grid printing by default   |
| Scale print          | Print of sensitivity information (no scale value)   |
| Trigger mark         | Print of trigger time, ON/OFF function (pointer is printed at any time)   |
| Speed display        | s/div range display (Pen recorder, Memory recorder, HD recorder)  |

**Synchronous unit (RA28-111) : RA2800 only**

|  |   |
|--|---|
| Max synchronous units  | Total 10 sets   |
| Connector / cable length   | Synchronous connector : RJ45 compliance<br>Connection cable: Litz wire STP(Shield Twist Pair), Straight connection wire (CAT5e or CAT6 compliance)<br>Cable length : max 200m |
| Setting  | Selection of synchronous mode Master/ Slave / External synchronization  |
| Delay time (including connected units to whole connection cable length and trigger detection delay time) |   |
| 8 $\mu$ s  | Within 200m : 2 units / 100m : 3 units / 33m : 4 units  |
| 10 $\mu$ s   | Within 200m : 3 units / 100m : 5 units / 33m : 7 units  |
| 20 $\mu$ s   | Within 200m : 5 units / 100m : 7 units / 33m : 10 units   |
| 50 $\mu$ s   | Within 200m : 10 units  |

**Utility software  
RA Viewer (RA23-701)**

|                           |   |
|---------------------------|---|
| OS                        | Windows2000/ XP _ display 1024 x 768 and above                                |
| Available system          | RA2300 / RA2800 / RA1100 / RA1200 / RA1300                                    |
| Y-T display               |   |
| Peace wise representation | 1 _ 16 split  |
| Display magnification     | x100 _ x10,000  |
| Thumbnail function        | Optional 1ch of whole data is available for display on thumbnail bar          |
| Value display             | Value, cursor value, value + cursor value (switching)                         |
| Search function           | Search by cursor, time, address, max/min, event                               |
| X-Y display               |   |
| Display channel number    | Selected data can be displayed on x-axis:1ch, y-axis:3ch                      |
| Out put file format       | Binary or CSV data  |
| Download                  | This software is available for download after completion of user registration |

\*1: Setting speed may not work due to constraint of main unit or CPU speed in PC.  
\*2: Real time monitor is not displayed for RA1000 series.

# Input Unit Specifications

**2-CH High Resolution Amp(AP11-101) & 2-CH High Speed Amp(AP11-103)**

|                         |  |
|-------------------------|--|
| Input                   | 2 chs/unit, isolated unbalanced input, isolated BNC connector  |
| Input Coupling          | AC and DC coupling   |
| Input Impedance         | 1M $\Omega$ or higher  |
| Measurement Range       | $\pm 0.1, 0.2, 0.5, 1, 2, 5, 10, 20, 50, 100, 200, 500V$ FS  |
| Range Accuracy          | AP11-101: within $\pm 0.3\%$ FS(within $\pm 0.8\%$ FS at $\pm 500V$ )<br>AP11-103: within $\pm 0.5\%$ FS(within $\pm 0.8\%$ FS at $\pm 500V$ )   |
| Offset Accuracy         | AP11-101: within $\pm 0.3\%$ FS(at 25°C)<br>AP11-103: within $\pm 0.5\%$ FS  |
| Linearity               | AP11-101: within $\pm 0.1\%$ FS(at 25°C)<br>AP11-103: within $\pm 0.2\%$ FS  |
| Allowable Input Voltage | Range of $\pm 10V$ to 500V: $\pm 500V$ max(DC or AC peak values)<br>Range of $\pm 0.1V$ to 5V: $\pm 100V$ max(DC or AC peak values)  |
| CMV                     | Unit only: 42V (DC or AC peak values)<br>When using isolated BNC cable(optional): 300VAC   |
| Frequency Response      | AP11-101(at DC coupling: DC to 50kHz(+0.5, -3dB) at AC coupling: 0.3 to 50kHz(+0.5, -3dB)<br>AP11-103(at DC coupling: DC to 400kHz(+0.5, -3dB) at AC coupling: 0.3 to 400kHz(+0.5, -3dB) |
| Low-pass Filter         | AP11-101:bessel type(attenutation factor: -12dB/OCT) 30, 300, 3kHz, OFF(+0.5, -3dB)<br>AP11-103:bessel type(attenutation factor: -12dB/OCT) 5, 50, 50k, 5k, 50kHz, OFF(+0.5, -3dB)       |
| A/D Converter           | AP11-101: 16-bit, 100kHz max(simultaneous 2-ch sampling)<br>AP11-103: 12-bit, 1MHz max(simultaneous 2-ch sampling)   |
| Temperature Stability   | AP11-101/zero point: within $\pm 0.02\%$ FS/°C<br>AP11-103/zero point: within $\pm 0.03\%$ FS/°C   |
| Gain(Range)             | within $\pm 0.01\%$ FS/°C  |
| Weight                  | AP11-101: approx 230g or less, AP11-103: approx 240g or less   |

**F/V Converter(AP11-108)**

|                         |   |
|-------------------------|---|
| Input                   | 1 ch/unit, isolated unbalanced input, BNC connector                                     |
| Input Coupling          | AC and DC coupling  |
| Input Impedance         | 100k $\Omega$ or higher   |
| Input Frequency Range   | 1Hz to 10kHz(pulse width: 20 $\mu$ s or longer)   |
| Measurement Range       | 0.1, 0.2, 0.5, 1, 2, 5, 10kHz FS  |
| Accuracy                | Within $\pm 0.5\%$ FS   |
| Linearity               | Within $\pm 0.3\%$ FS   |
| Trigger Level           | Selectable from 0V or 2.5V  |
| Allowable Input Voltage | $\pm 100V$ (DC or AC peak values)   |
| CMV                     | Unit only: 42V (DC or AC peak values), when using isolated BNC cable (optional): 300VAC |
| Response Time           | Approx 20ms(at the range of 10kHz)  |
| A/D Converter           | 16-bit, 100kHz max  |
| Temperature Stability   | Zero point: within $\pm 0.03\%$ FS/°C Gain(range): within $\pm 0.02\%$ FS/°C            |
| Weight                  | 125g or less  |

**2-CH Vibration/RMS Amp(AP11-109)**

|                         |   |
|-------------------------|---|
| Input                   | 2 chs/unit, isolated unbalanced input, isolated BNC connector   |
| Input Coupling          | AC and DC coupling  |
| Input Impedance         | 1M $\Omega$ or higher   |
| Power Supply for Sensor | 2mA, 18V or higher  |
| Measurement Range       | 0.1, 0.2, 0.5, 1, 2, 5, 10, 20, 50, 100, 200, 500V  |
| Accuracy                | Voltage: Within $\pm 0.3\%$ FS(within $\pm 0.8\%$ FS at $\pm 500V$ )<br>RMS: Within $\pm 2\%$ FS(at DC and 40Hz to 20kHz) |
| Linearity               | within $\pm 0.1\%$ FS   |
| Crest Factor            | 2.8 max(when used as RMS amp)   |
| CMV                     | Unit only: 42V (DC or AC peak values)<br>When using isolated BNC cable(optional): 300VAC                                  |
| Frequency Response      | DC coupling: DC to 50kHz(+1, -3dB) AC coupling: 1 to 50kHz(+1, -3dB)  |
| Low-pass Filter         | Butterworth type(attenutation factor: -24dB/OCT) 30, 100, 300Hz, 1kHz and OFF   |
| High-pass Filter        | Butterworth type(attenutation factor: -24dB/OCT) 10, 30, 100Hz and OFF  |
| A/D Converter           | 16-bit, 100kHz max  |
| Temperature Stability   | Zero point: within $\pm 0.02\%$ FS/°C Gain(range): within $\pm 0.01\%$ FS/°C  |
| Weight                  | 270g or less  |

**2-CH FFT Amp(AP11-102)**

|                         |   |
|-------------------------|---|
| Input                   | 2 chs/unit, isolated unbalanced input, isolated BNC connector                                     |
| Input Coupling          | AC and DC coupling(only AC coupling when connected with amp-embedded piezoelectric accelerometer) |
| Input Impedance         | 1M $\Omega$ or higher   |
| Power Supply for Sensor | 2mA, +18V or higher   |
| Measurement Range       | $\pm 0.1, 0.2, 0.5, 1, 2, 5, 10, 20, 50, 100, 200, 500V$ FS                                       |
| Range Accuracy          | Within $\pm 0.3\%$ FS(within $\pm 0.8\%$ FS at $\pm 500V$ )                                       |
| Linearity               | within $\pm 0.1\%$ FS   |
| Allowable Input Voltage | $\pm 500V$ (DC or AC peak values) ( $\pm 30V$ at AC coupling in $\pm 0.1$ to 5V range)            |
| CMV                     | Unit only: 42V (DC or AC peak values)<br>When using isolated BNC cable(optional): 300VAC          |
| Frequency Response      | DC coupling: DC to 50kHz(+0.5, -3dB) AC coupling: 0.3 to 50kHz(+0.5, -3dB)                        |
| Low-pass Filter         | Bessel type(attenutation factor: -12dB/OCT) 30, 300, 3kHz, OFF(+0.5, -3dB)                        |
| Anti-aliasing Filter    | 20, 40, 80, 200, 400, 800Hz, 2, 4, 8, 20, 40kHz   |
| Offset Accuracy         | Drop characteristics: -72dB/OCT at 1.5 x fc<br>within $\pm 0.3\%$ FS(at 25°C)                     |
| A/D Converter           | 16-bit, 100kHz max  |
| Temperature Stability   | Zero point: within $\pm 0.02\%$ FS/°C Gain(range): within $\pm 0.01\%$ FS/°C                      |
| Weight                  | 240g or less  |

**2-CH TC/DC Amp(AP11-106A) & TC/DC Amp(AP11-107)**

|                                |  |  |
|--------------------------------|--|--|
| Input                          | AP11-106A: 2 chs/unit, isolated unbalanced input, terminal block M4<br>AP11-107: 1 ch/unit, isolated unbalanced input, 2 binding posts                           |  |
| Input Coupling                 | DC coupling  |  |
| Input Impedance                | 10M $\Omega$ or higher(approx 1M $\Omega$ at 5, 10, 20, 50VFS in DC range)   |  |
| Thermocouple                   | AP11-106A: R, T, J, K, W<br>AP11-107: R, T, J, K   |  |
| Measurement Range(Temperature) | AP11-106A  | AP11-107   |
| R:                             | 0 to 1600°C FS   | 800°C FS(0 to 800°C ), 1600°C FS(0 to 1600°C )       |
| T:                             | -200 to 400°C FS   | 200°C FS(-200 to 200°C ), 400°C FS(-200 to 400°C )   |
| J:                             | -200 to 1000°C FS  | 200°C FS(-200 to 200°C ), 1000°C FS(-200 to 1000°C ) |
| K:                             | -200 to 1350°C FS  | 200°C FS(-200 to 200°C ), 1200°C FS(-200 to 1200°C ) |
| W:                             | 0 to 2300°C FS   | N/A  |
| Measurement Range(Voltage)     | AP11-106A: 100, 200, 500mV, 1, 2, 5, 10, 20, 50V FS<br>AP11-107: 10, 20, 50, 100, 200, 500mV, 1, 2, 5, 10, 20, 50V FS  |  |
| Range Accuracy                 | Temperature: $\pm 0.5\%$ FS(within $\pm 1\%$ at 0°C or lower)<br>$\pm 0.3\%$ FS(AP11-106A), $\pm 0.5\%$ FS(AP11-107)   |  |
| Cold Junction Compensation     | Internal/external switchable. Accuracy: within $\pm 2^\circ\text{C}$ (within $\pm 1^\circ\text{C}$ at stable temperature of 20°C at input terminal)              |  |
| Linearity                      | Within $\pm 0.1\%$ FS  |  |
| Allowable Input Voltage        | 50V (DC or AC peak values)   |  |
| CMV                            | AP11-106A: 42V(DC or AC peak values)<br>AP11-107: 300V(DC or AC peak values)   |  |
| Frequency Response             | DC to 40kHz( $\pm 0.5$ , -3dB)   |  |
| Low-pass Filter                | Bessel type(attenuation factor: -18dB/OCT)<br>1, 30, 500, 5kHz, OFF(+0.5, -3dB)  |  |
| A/D Converter                  | AP11-106A: 15-bit, 100kHz max(simultaneous 2-ch sampling)<br>AP11-107: 14-bit, 100kHz max  |  |
| Temperature Stability          | When used as temp amp/gain(range): within $\pm 0.04\%$ FS/C<br>When used as DC amp/zero point: within $\pm 0.03\%$ FS/C<br>gain(range): within $\pm 0.01\%$ FS/C |  |
| Weight                         | AP11-106A: 240g or less, AP11-107: 200g or less  |  |

**Event Amp(AP11-105)**

|                 |  |
|-----------------|--|
| Input           | 8 channels/unit  |
| Input Type      | Common ground in unit, case-free<br>Sets voltage or contact for each channel<br>Voltage input: input voltage range 0 to +24V<br>detection level: H level 2.5V or higher<br>L level 0.5V or lower<br>Contact input: open 2k $\Omega$ or higher, close 250 $\Omega$ or lower |
| Response Time   | Within 1 $\mu\text{s}$ (at input 'H', level +5V or higher)   |
| Input Connector | Logic IC cord(0311-5007) x 2; alligator clip cord(0311-5009) x 2<br>IC clip cord(0311-5008) x 2  |
| Weight          | 100g or less   |

**Charge Converter(AP11-901, AP11-902, AP11-903)**

|                       |   |
|-----------------------|---|
| Gain                  | 1.0mV/pC $\pm 5\%$ (AP11-901, AP11-902), 0.1mV/pC $\pm 5\%$ (AP11-903)  |
| Max Input Charge      | 5000pC(AP11-901, AP11-902), 50000pC(AP11-903)   |
| Frequency Range       | Approx 1.6Hz to 50Hz  |
| Max Output Voltage    | 5Vp-p or lower  |
| Drive Voltage         | 12 to 25 VDC  |
| Drive Current         | 0.5 to 5mA  |
| Rated Noise           | 20 $\mu\text{Vrms}$ or lower  |
| Phase                 | 180°  |
| Operating Temperature | -20 to 80°C (AP11-901), -20 to 110°C (AP11-902, AP11-903)   |
| Connector             | Input: miniature connector(10-32UNF)<br>Output: male BNC terminal(AP11-901)<br>female BNC connector(AP11-902, AP11-903) |
| Weight                | 20g or less(AP11-901), 65g or less(AP11-902, AP11-903)  |

**2-CH AC Strain Amp(AP11-104A) & 2-CH DC Strain Amp(AP11-110)**

|                                  |  |   |
|----------------------------------|--|---|
| Input                            | 2 chs/unit, isolated unbalanced input, isolated NDIS connector   |   |
| Input Coupling                   | AP11-104A: balanced input(isolation: between channels inside unit or between each channel and chassis) AP11-110: DC  |   |
| Input Impedance                  | 10M $\Omega$ + 10M $\Omega$ or higher (AP11-110 only)  |   |
| Bridge Power Supply              | AP11-104A: sine wave 2Vrms, 5kHz(AC bridge power supply RA23-116 required)<br>AP11-110: 2V, 5V   |   |
| Applicable Gauge                 | AP11-104A: 120 to 1k $\Omega$  |   |
| Resistance                       | AP11-110: 120 to 2k $\Omega$ (at BV=2V), 350 to 2k $\Omega$ (at BV=5V)   |   |
| Gauge Factor                     | AP11-104A: 1.9 to 2.2<br>AP11-110A: 2.0  |   |
| Range of Balance                 | AP11-104A/resistance: $\pm 2\%$ (1000 $\mu\Omega$ $\epsilon$ ) or lower capacitance: 2000pF or lower<br>AP11-110 $\pm 3\%$ (15000 $\times 10^{-6}\mu\Omega$ $\epsilon$ ) or lower            |   |
| Balance Method                   | AP11-104A  | AP11-110  |
| Resistance                       | Auto-balance   | Auto-balance  |
| Capacitance                      | Auto-balance(500pF or lower eliminated)  | N/A   |
| Balance Time                     | Within 1s at 1 channel   | Within 0.5s at 1channel   |
| Remained Voltage Accuracy        | Within $\pm 0.5\%$ FS  | Within 0.3% FS  |
| Max Sensitivity(AP11-104)        | Over full scale at 50 $\mu\Omega$ $\epsilon$ (at bridge voltage of 2V or higher)   |   |
| Measurement Range                | AP11-104A  | AP11-110  |
| Strain                           | 1k, 2k, 5k, 10k, 20k $\mu\Omega$ $\epsilon$ ·FS  | 2k, 5k, 10k, 20k, 50k $\mu\Omega$ $\epsilon$ ·FS(at BV=2V)<br>800, 2k, 4k, 8k, 20k $\mu\Omega$ $\epsilon$ ·FS(at BV=5V) |
|                                  | Voltage  | N/A   |
| Accuracy                         | Within 0.3% FS(AP11-110 only)  |   |
| Internal Calibrator and Accuracy | $\pm 0.5k$ , 1k, 2k, 3k, 5k $\mu\Omega$ $\epsilon$ Accuracy: within $\pm 0.5\%$ FS (AP11-104 only)   |   |
| Linearity                        | AP11-104A: $\pm 0.2\%$ FS<br>AP11-110: $\pm 0.1\%$ FS  |   |
| CMV                              | 300VAC   |   |
| Allowable Input Voltage          | $\pm 8V$ (DC or AC peak value)   |   |
| Frequency Response               | AP11-104A: DC to 2kHz(+1, -3dB)<br>AP11-110: DC to 50kHz(+0.5, -3dB)   |   |
| Low-pass Filter                  | AP11-104A: butterworth type(attenuation factor: -12dB/OCT) 10, 30, 100, 300Hz and OFF(+1, -3dB)<br>AP11-110: bessel type(attenuation factor: -12dB/OCT) 10, 30, 100, 300Hz and OFF(+1, -3dB) |   |
| A/D Converter                    | 16 bits, 100kHz max  |   |
| Temperature Stability            | Zero point: within $\pm 0.05\%$ FS/C (AP11-104A), within $\pm 0.1\%$ FS/C (AP11-110)<br>Gain(range): within $\pm 0.05\%$ FS/C (AP11-104A), within $\pm 0.01\%$ FS/C (AP11-110)               |   |
| Weight                           | 285g or less(AP11-104A), 240g or less(AP11-110)  |   |

**2-CH Zero Suppression Amp(AP11-111)**

|                         |  |
|-------------------------|--|
| Input                   | 2 chs/unit, isolated unbalanced input, isolated BNC connector  |
| Input Coupling          | AC and DC coupling(max allowable input $\pm 30V$ at AC coupling for measurement range $\pm 0.1$ to 2V)   |
| Input Impedance         | 1M $\Omega$ or higher  |
| Measurement Range       | $\pm 0.1, 0.2, 0.5, 1, 2, 5, 10, 20, 50, 100, 200, 500V$ FS  |
| Range Accuracy          | Within $\pm 0.5\%$ FS(within $\pm 0.8\%$ FS at $\pm 500V$ FS)  |
| Offset Accuracy         | within $\pm 0.5\%$ FS  |
| Linearity               | within $\pm 0.2\%$ FS  |
| Allowable Input Voltage | range of $\pm 5V$ to $\pm 500V$ : $\pm 500V$ max(DC or AC peak value)<br>range of $\pm 0.1V$ to $\pm 2V$ : $\pm 100V$ max(DC or AC peak value)   |
| CMV                     | 42V (DC or AC peak values)<br>When using isolated BNC cable(optional): 300VAC  |
| Frequency Response      | At DC coupling: DC to 5kHz(+0.5, -3dB) At AC coupling: 0.3 to 5kHz(+0.5, -3dB)   |
| Low-pass Filter         | Bessel type(attenuation factor: -12dB/OCT) 30, 300, 3kHz, OFF(+0.5, -3dB)  |
| Suppression Voltage     | $\pm 13V$ at $\pm 0.1, 0.2, 0.5, 1$ and 2V range<br>$\pm 110V$ at $\pm 5, 10, 20, 50, 100, 200, 500V$ range<br>Resolution: 500 $\mu V$ or less at $\pm 0.1, 0.2, 0.5, 1$ and 2V range<br>5mV or less at $\pm 5, 10, 20, 50, 100, 200, 500V$ range<br>Accuracy: within $\pm 0.5\%$ (at suppression voltage +13V max)<br>Temp Stability: $\pm 0.005\%/C$ (at suppression voltage +13V max) |
| Auto Zero Suppression   | Recognize current input voltage and suppress the voltage automatically.<br>Time: within 1 sec<br>Remain voltage: within $\pm$ (resolution of suppression voltage x 10)V  |
| A/D Converter           | 16-bit, 100kHz max(simultaneous sampling of 2chs)  |
| Temperature Stability   | Zero point: within $\pm 0.03\%$ FS/C Gain(range): within $\pm 0.01\%$ FS/C   |
| Weight                  | 260g or less   |

## Main Unit & Accessories

| Main Unit*  | Item | Model  | Standard accessories  |
|-------------|------|--------|---|
| Omniace III |      | RA2300 | AC power cable(w/adaptor) x 1, recording paper x 1, paper holder x 1, input unit slot cover plate x 1set, Display Protection Board x 1, Touch Panel Sheet x 1 and user's manual x 1 |
|             |      | RA2800 | AC power cable(w/adaptor) x 1, recording paper x 1, holder x 1, input unit slot cover plate x 1set and user's manual x 1  |

\*1 Input units are not included.

| Input Unit | Item                        | Model     | Rating  |
|------------|-----------------------------|-----------|---|
|            | 2-ch High Resolution DC Amp | AP11-101  | Input: $\pm 100mV$ to $\pm 500V$ , A/D resolution: 16-bit, sampling: 10 $\mu\text{s}$   |
|            | 2-ch High Speed DC Amp      | AP11-103  | Input: $\pm 100mV$ to $\pm 500V$ , A/D resolution: 12-bit, sampling: 1 $\mu\text{s}$ (RA2800 : 2 $\mu\text{s}$ )                          |
|            | 2-ch Zero Suppression Amp   | AP11-111  | Input: $\pm 100mV$ to $\pm 500V$ , A/D resolution: 16-bit, sampling: 10 $\mu\text{s}$   |
|            | 2-ch FFT Amp                | AP11-102  | Anti-aliasing filter: 72dB/OCT, with power supply for sensor  |
|            | Event Amp                   | AP11-105  | Input: 8 logics (voltage/contact)   |
|            | 2-ch TC/DC Amp              | AP11-106A | Input: R, T, J, K, W ( $\pm 100mV$ to $\pm 500V$ ), A/D resolution: 15-bit  |
|            | TC/DC Amp                   | AP11-107  | Input: R, T, J, K ( $\pm 10mV$ to $\pm 50V$ ), A/D resolution: 14-bit   |
|            | 2-ch AC Strain Amp*2        | AP11-104A | Frequency response: 2kHz, bridge power supply: 5kHz   |
|            | 2-ch DC Strain Amp          | AP11-110  | Input: 800 $\mu\Omega$ $\epsilon$ to 20k $\mu\Omega$ $\epsilon$ (BV=5V), 2k $\mu\Omega$ $\epsilon$ to 50k $\mu\Omega$ $\epsilon$ (BV=2V), |
|            | 2-ch Vibration/RMS Amp      | AP11-109  | Input: $\pm 100mV$ to $\pm 500V$ , sampling: 10 $\mu\text{s}$ , with power supply for sensor  |
|            | F/V converter               | AP11-108  | Input: 1 Hz to 10k Hz   |

\*2 Optional AC bridge power unit(RA23-116) required.

|               | Item  | Model                                  | Rating   |  |
|---------------|---|--|--|--|
| Optional Unit | Arithmetic FFT Unit                               | RA23-751                               |  |  |
|               | Sensitivity DIV setting Unit                      | RA28-112                               | RA2800 only  |  |
|               | Synchronous Unit                                  | RA28-111                               | RA2800 only  |  |
|               | Interface   | Remote Unit                            | RA23-112   | W/cable(1.5m,I/O connector 28-pin and open wire)   |
|               |   | RS-232C Unit                           | RA23-114   |  |
|               | AC Bridge Power Supply Unit                       | RA23-116                               |  |  |
|               | Dust Cover  |  | RA11-121   | RA2300 only  |
|               |   |  | RA28-114   | RA2800 only  |
|               | Touch Panel Sheet                                 | RA23-125                               | RA2300 only, 3 pieces/Set                              |  |
|               | Display Cover                                     | RA23-126                               |  |  |
|               | Display Protection Board                          | RA23-131                               | RA2300 only  |  |
|               | Event Input                                       | Event Unit                             | RA23-113   | RA2300 only, W/Cable(0311-5252)  |
|               |   | Event Unit A                           | RA23-113A  | RA2300 only  |
|               |   | Event Input Extension Cable            | RA23-127   | RA2300 only  |
|               |   | Event Input Cable                      | 0311-5252  | RA2300 only  |
|               |   | Event Box _Set                         | RA23-129   | RA2300 only  |
|               |   | Event Box                              | RA23-316   | RA2300 only  |
|               |   | Connecting Cable for Event Box and I/F | 0311-5257  | RA2300 only  |
|               | Event Box Interface                               | RA23-314                               | RA2300 only  |  |
|               | Hand Writing Table                                | RA23-128                               | RA2300 only  |  |
|               | Hard Carrying Case (w/Casters)                    |  | RA11-117   | RA2300 only  |
|               |   |  | RA28-113   | RA2800 only  |
|               | Soft Carrying Case                                | RT36-115                               | RA2300 only  |  |
|               | Roll Paper Take-up                                |  | RT31-164   | RA2300 only  |
|               |   |  | RA28-119   | RA2800 only  |
|               | Z-fold Paper Storage Box                          |  | RT12-103   | RA2300 only, Including Z-fold paper adaptor (RA12-301)   |
|               |   |  | RA28-115   | RA2800 only, Including Z-fold paper adaptor (RT34-312)   |
|               | Z-fold paper adaptor                              |  | RA12-301   | RA2300 only  |
|               |   |  | RT34-312   | RA2800 only  |
|               | Mobile Cart                                       |  | RA11-118   | RA2300 only  |
|               |   |  | RA28-116   | RA2800 only  |
|               | Rack Mount Bracket for EIJ                        | RA28-118                               | RA2800 only  |  |
|               | Charge Converter <sup>1</sup>                     |  | AP11-901   | 1.0mV/pC, small type(connected to input amp),connectors(input:miniature connector,output:BNC male) |
|               |   |  | AP11-902   | 1.0mV/pC,connectors(input:miniature connector,output:BNC female)                                   |
|               |   |  | AP11-903   | 0.1mV/pC,for high sensitivity sensors connectors(input:miniature connector,output:BNC female)      |
|               | AC/DC Voltage Detector                            | 1539                                   | 4 inputs   |  |
|               | AC Voltage Level Detector                         |  | 1540   | 1 input, 100VAC / 120VAC   |
|               |   |  | 1543   | 1 input, 220VAC / 240VAC   |
|               | Voltage Output Cable                              | 0311-5004                              | Length: 1.5m, connectors : pin tip and banana plug     |  |
|               | Voltage Output Extension Cable                    | 0311-5006                              | Length: 1.4m, connectors : pin tip and pin tip jack    |  |
|               | AC/DC Digital Clamp Meter                         | 2003A <sup>2</sup>                     | for high current (2000A, 400A / DC and 40 to 1kHz)     |  |
|               | AC/DC Digital Clamp Adaptor                       | 8113 <sup>3</sup>                      | for medium current (200A, 20A, 2A / DC to 1kHz)        |  |
|               | Clamp Adaptor                                     | 8112 <sup>3</sup>                      | for low current (20A, 2A, 0.2A / 40 to 10kHz)          |  |
|               | Signal Input Cable (for Clamp Meter 2003A output) | 0311-5184 <sup>4</sup>                 | Length: 2m, small plug for microphone and isolated BNC |  |
|               | Uninterruptible Power Supply system               | SUA500JB <sup>5</sup>                  | Smart-UPS500   |  |
|               | UPS cable   | 0311-5256 <sup>5</sup>                 | Length: 2.5m   |  |

\*1 Required for using piezoelectric accelerometer with 2-ch vibration/RMS amp or 2-ch FFT amp.

\*2 Use signal input cable(0311-5184) if connecting output from 2003A to RA2300/RA2800

\*3 Use a BNC adaptor(0243-3021) if connecting output from 8112 and 8113 to RA2300/RA2800

\*4 Cable for inputting output from 2003A to isolated BNC connector of RA2300/RA2800

\*5 Required for RS-232C Unit (RA23-114), Uninterruptible Power Supply system (SUA500JB), UPS cable(0311-5256) to use auto shutdown function.

|                | Item   | Model                     | Rating   |
|----------------|--|---------------------------|--|
| Cable          | Signal Input cable                             | 0311-5175                 | Length: 2m, isolated BNC connector and alligator clip (+:red, -:black)           |
|                |  | 0311-5200                 | Length: 2m, isolated BNC connector and metal BNC connector                       |
|                |  | 0311-5177                 | Length: 2m, safety-BNC connector and open wire                                   |
|                |  | 0311-5160 <sup>6</sup>    | Length: 2m, 2-banana and alligator clip (+:red, -:black)                         |
|                |  | 0311-5174 <sup>6</sup>    | Length: 2m, 2-banana and BNC connector   |
|                | AC bridge power distribution cable             | 0311-2057                 | Length: 2m, BNC connector and alligator clip (+:red, -:black), mold color: black |
|                |  | 0311-5084                 | Length: 2m, BNC connector and alligator clip (+:red, -:black), mold color: red   |
|                |  | 47226                     | Length: 2m, BNC connector and BNC connector                                      |
|                | Logic IC cable                                 | 0311-5007                 | Logic IC cord (1pc)  |
|                |  | 0311-5008                 | IC clip cord(4pcs/set)   |
|                |  | 0311-5009                 | alligator clip cord(4pcs/set)  |
|                | Event input cable                              | 0311-5001                 | Length: 1.5m, DIN8P and open wire  |
|                | Event input extension cable                    | 0311-5005                 | Length: 1.5m, DIN8P plug and DIN8P socket  |
|                | BNC Adaptor                                    | 0243-3021                 | Isolated BNC connector and S terminal plug                                       |
|                | BNC Adaptor (for AC bridge power distribution) | 0243-2118                 | T-type Plug / 2receptacles coupler   |
| AC power cable | 47326  | Length: 2.5m with adaptor |  |

\*6 BNC adaptor(0243-3021) required if connecting to input unit with isolated BNC terminal.

|                              | Item                                | Model  | Rating                                      |
|------------------------------|-------------------------------------|--------|---|
| Recording paper <sup>7</sup> | Recording paper                     | YPS106 | 220x30m roll paper(5 rolls/box)             |
|                              | Recording paper (w/perforated line) | YPS108 | 220x30m roll paper(5 rolls/box)             |
|                              | Recording paper (100m roll paper)   | YPS114 | RA2800 only, 220x100m roll paper(1roll/box) |
|                              | Recording paper (Z-fold paper)      | YPS112 | 220x201m Z-fold paper(1 set/box)            |

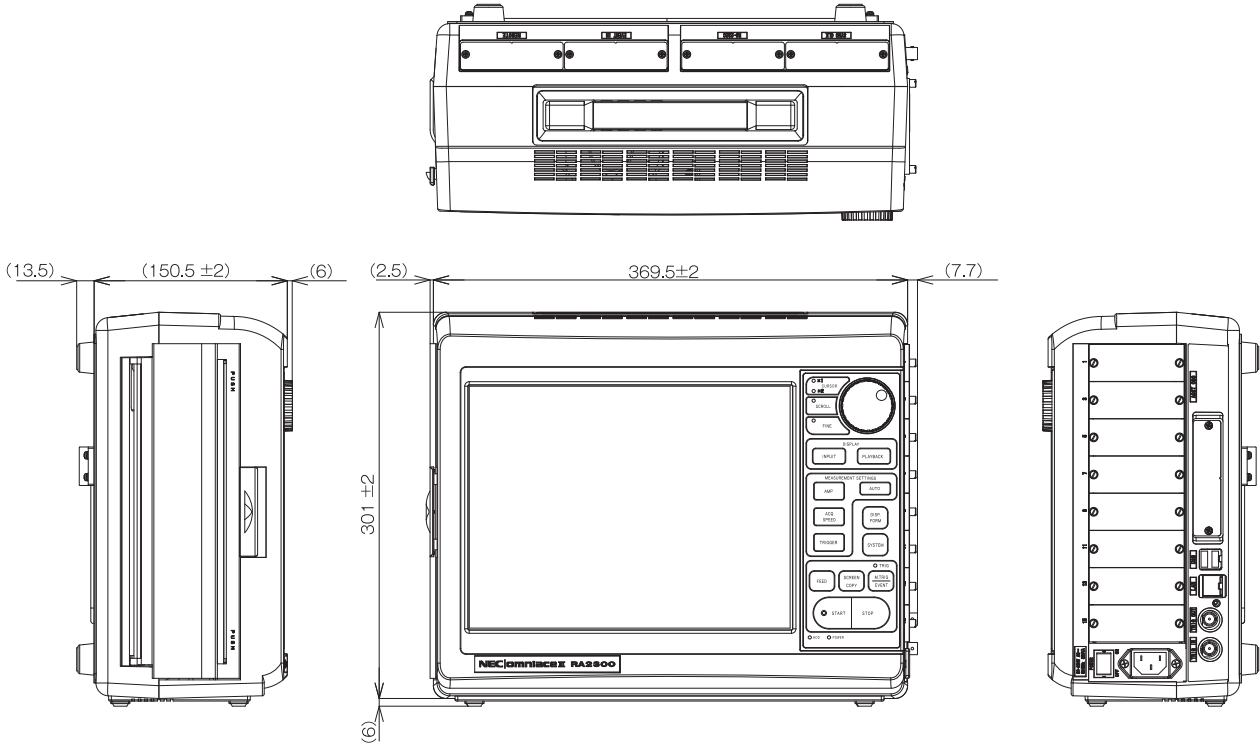
\*7 Quality not assured if used papers other than above.

|                                     | Item                                | Model                                   | Rating                                  |
|-------------------------------------|-------------------------------------|---|---|
| Software                            | Unifizer basic PKG                  | NS3100-P01                              | RA2000series, remote control PKG        |
|                                     | Unifizer basic PKG                  | NS3200-P01                              | RA series, off line data display PKG    |
|                                     | Unifizer basic PKG2                 | NS3100-P02                              | RA1000series, remote control PKG        |
|                                     | Unifizer basic PKG3                 | NS3100-P03                              | RA1000/RA2000series, remote control PKG |
|                                     | Unifizer extension PKG1             | NS3100-P04                              | NS3100-P01+RA1000, driver addition PKG  |
|                                     | Unifizer courtesy PKG <sup>8</sup>  | NS3100-C01                              | RA2000series, remote control PKG        |
|                                     | Unifizer courtesy PKG <sup>8</sup>  | NS3200-C01                              | RA series, off line data display PKG    |
|                                     | Unifizer courtesy PKG2 <sup>8</sup> | NS3100-C02                              | RA1000series, remote control PKG        |
| Unifizer courtesy PKG3 <sup>8</sup> | NS3100-C03                          | RA1000/RA2000series, remote control PKG |   |

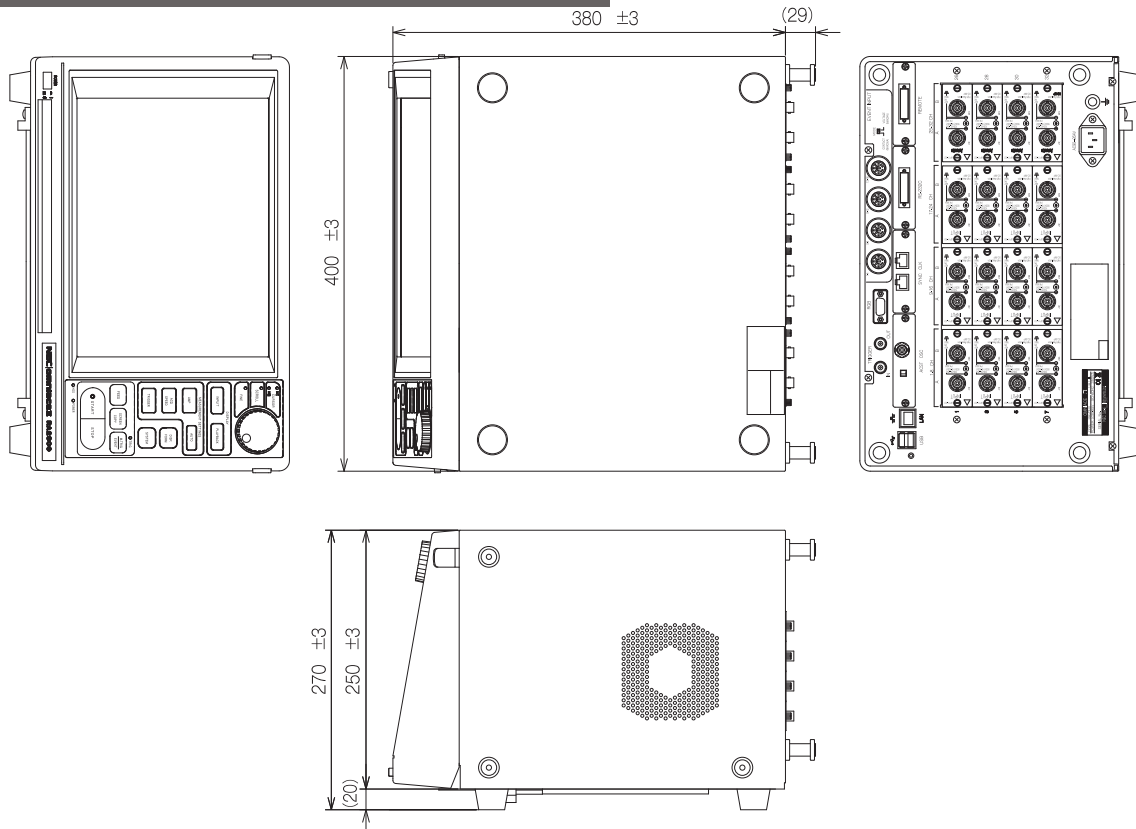
\*8 Unifizer courtesy PKG is only for the owner of Omni viewer (NS2100) .

# External Drawing

## ■ Dimensions of RA2300



## ■ Dimensions of RA2800



## Option Unit Appearance



Remote Unit (RA23-112)

RS-232C Unit (RA23-114)



AC Bridge Power Unit (RA23-116)

RA2800 Only



Synchronous Unit (RA28-111)

RA2300 Only



Event Unit (RA23-113)  
Event Unit A (RA23-113A)

RA2300 Only

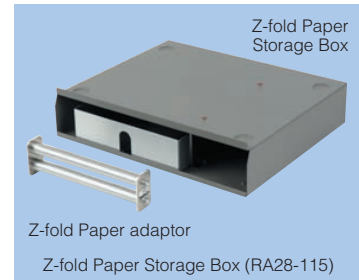


Z-fold Paper  
Storage Box

Z-fold  
Paper adaptor

Z-fold Paper Storage Box (RA12-103)

RA2800 Only



Z-fold Paper  
Storage Box

Z-fold Paper adaptor

Z-fold Paper Storage Box (RA28-115)

RA2300 Only



Event BOXSet (RA23-129)

RA2300 Only



Hard Carrying Case with Casters (RA11-117)

RA2800 Only



Hard Carrying Case with Casters (RA28-113)

RA2300 Only



Soft Carrying Case (RT36-115)

RA2300 Only



Roll Paper Take-up (RT31-164)

RA2300 Only



Hand Writing Table (RA23-128)



**CAUTION  
FOR SAFETY**

Please read "WARNING" & "CAUTION" in the operation manual attached to the product carefully for proper operation before using the product.

**NEC**

NEC Avio Infrared Technologies Co., Ltd.

1-5, Nishi-Gotanda 8-chome, Shinagawa-  
Tokyo 141-8535, Japan  
Phone: +81-3-5436-1614  
Fax : +81-3-5436-1395  
E-mail: osd@nec-avio.co.jp  
Web : <http://www.nec-avio.co.jp/en/>



[www.instrumentation.it](http://www.instrumentation.it)

Via Acquanera 29, 22100 COMO (Italy) tel. +39.031.525391 - fax +39.031.507984 - [info@instrumentation.it](mailto:info@instrumentation.it)

**INSTRUMENTATION DEVICES SRL**